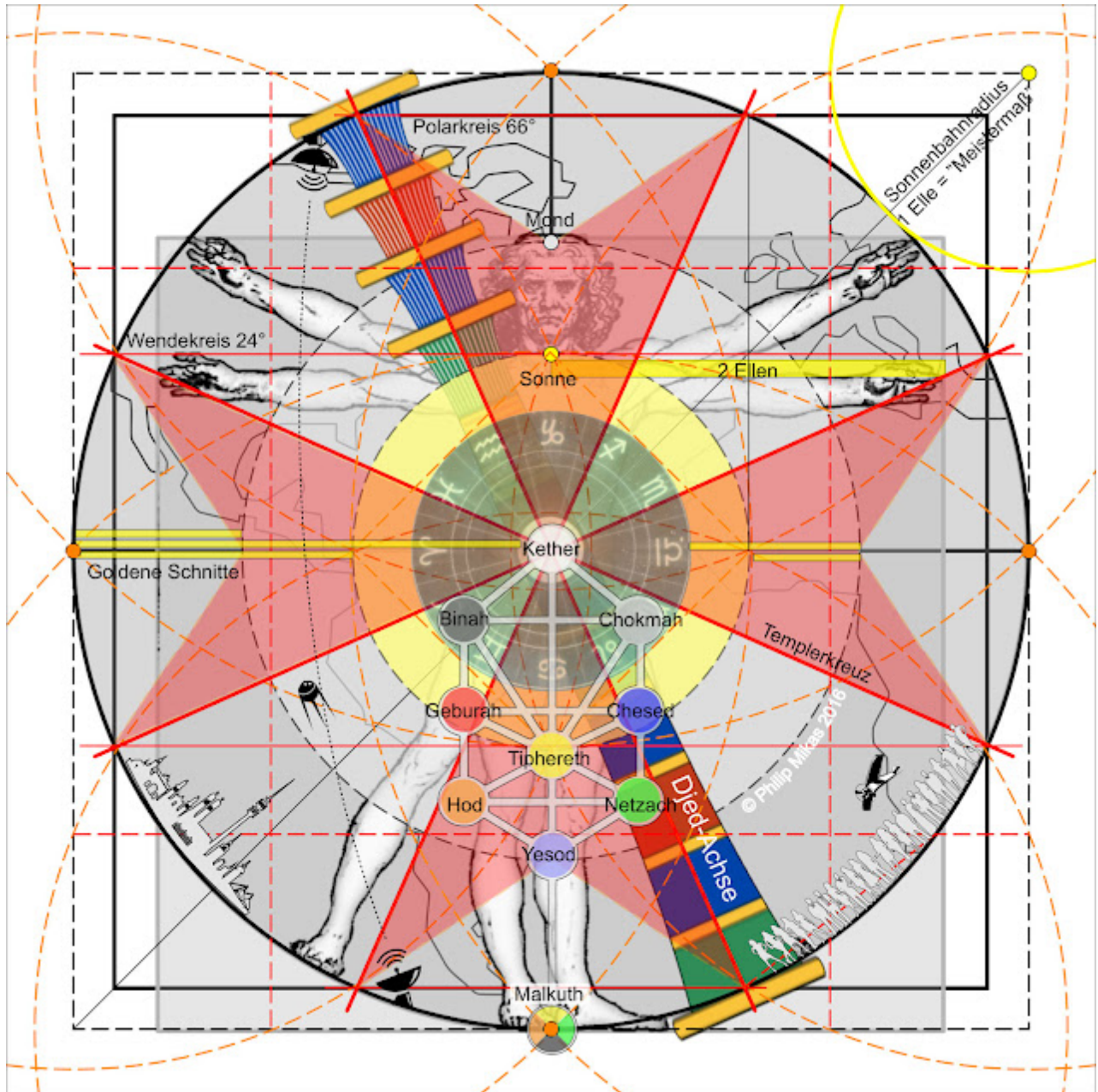


cellular cosmology

● auf--zur--mitte-blogspot-com.translate.goog/2015/12/zellularkosmologie.html

Cellular Cosmology Discussion Group



Cellular cosmology enables the long-awaited reunification of science and religion in an anthropocentric paradigm.

***"If the eye were not sun-like,
it could never see the sun;
If God's own power did not lie within us,
how could we be enchanted by anything divine?"***

- JW v. Goethe

"The opinion of those who say that what one thinks of creation makes no difference to the truth of faith, as long as one has the right opinion of God, is manifestly false. For an error about creation results in a false opinion of God. False ideas about creation lead to false ideas about God."

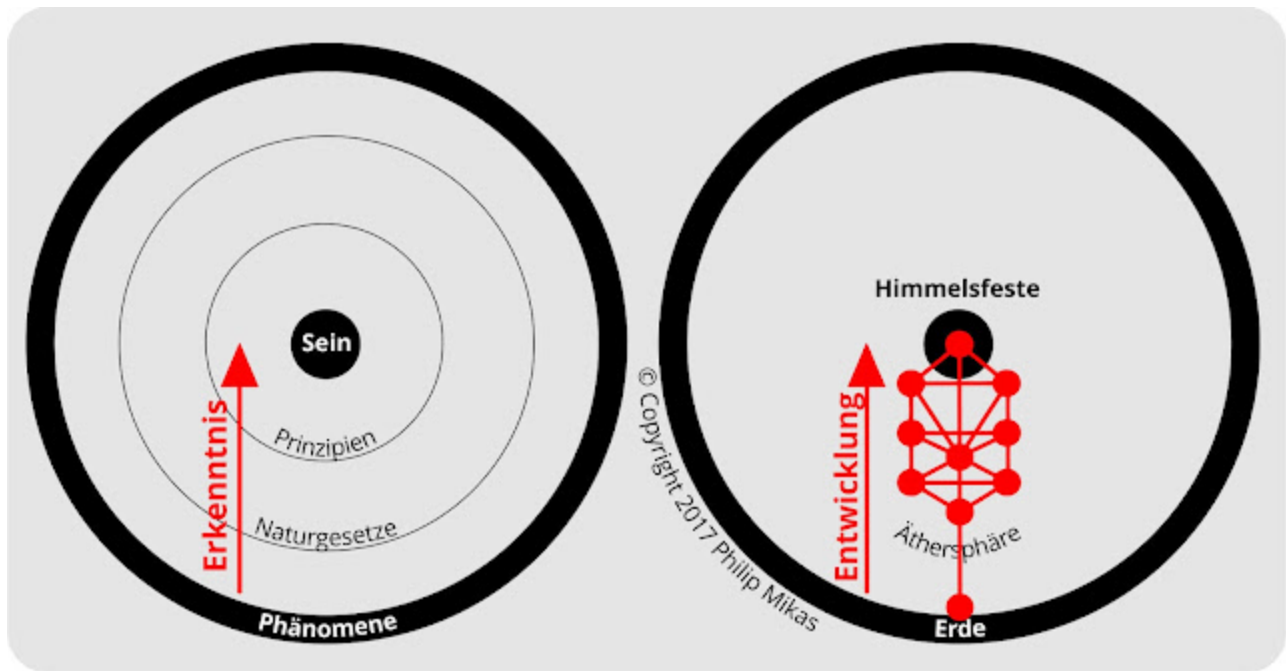
- Thomas Aquinas , 13th century.

Overview

The cosmic giant cell

Cellular cosmology (CC) is a scientifically equivalent cosmology which states that the structure of the universe corresponds in many respects to that of a human cell (fractal self-similarity of the universe), and that we do not actually live on the outside of a solid sphere, but on its inside (the sphere is a hollow sphere). The CC was seen in 1865 by Cyrus Teed (alias Koresh), or rather received as a direct message during an unconscious state from a "female deity". The CC was experimentally confirmed in 1897 in Naples Beach, Florida, see CR Teed's book "Cellular Cosmogony".

Let us begin with the strongest argument of this revealed cosmology: The CC is the first and only cosmology which unites all aspects of human life, such as the cell, the eye, the human, the metaphysical tree of life with its concrete Sephirot sun, moon, the 5 planets, the celestial firmament, the tilt of the earth's axis by 23°. Phenomena, natural laws, principles (mathematics / numerology) and finally pure, unchanging being form an epistemologically concentric hierarchy.



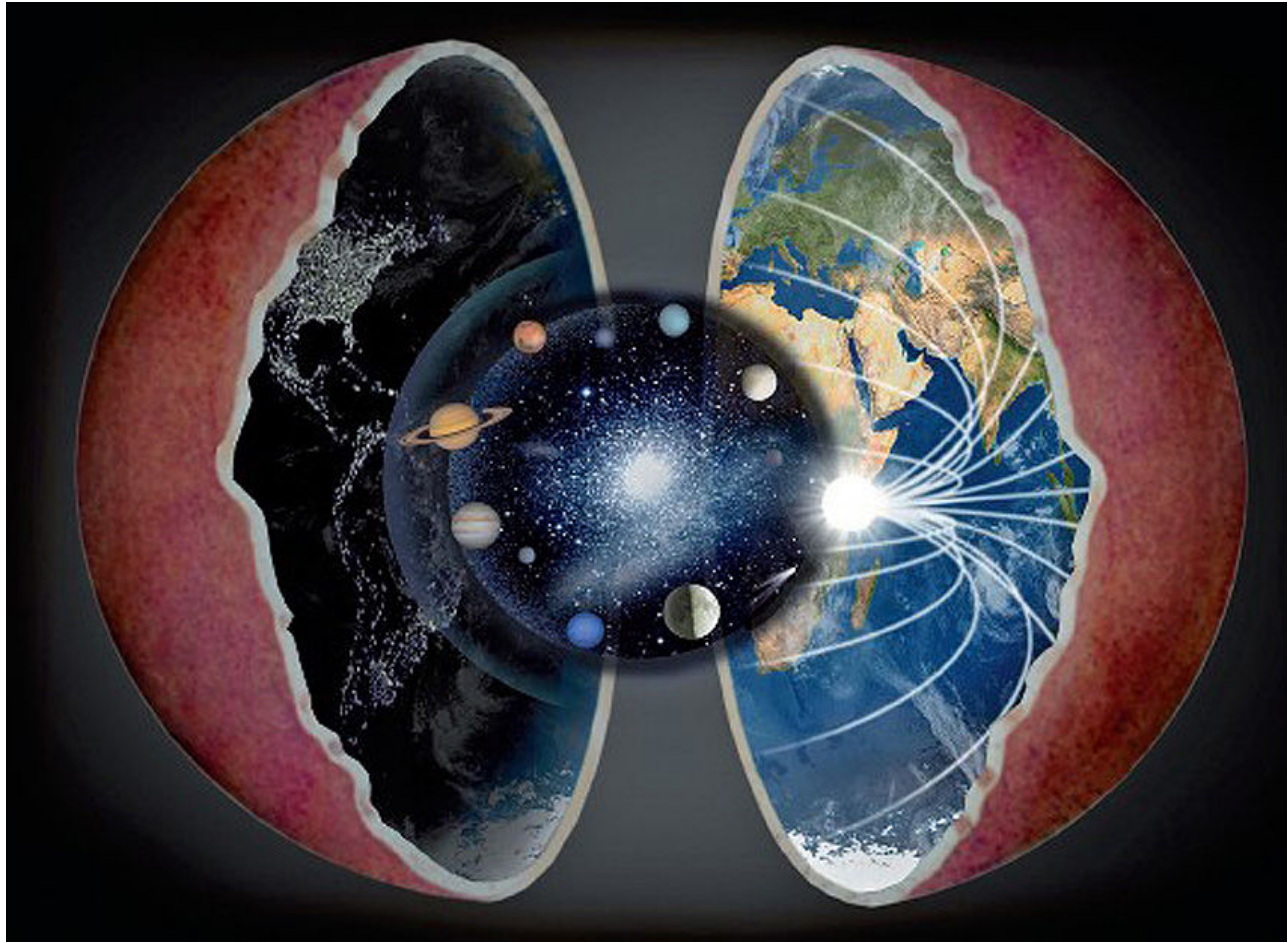
Only cellular cosmology unites philosophy, religion and science in a concentric symbol!

The title diagram shows the perfect agreement between material-biological physics and metaphysics. It is constructed very simply, starting in the upper right corner with the yellow radius, which corresponds to the sun's orbit. The orange arcs define the tropics and polar circles. The intersection points of the orange arcs with the outer square result in red dashed lines from which the moon's orbit is determined. This touches the pineal gland exactly, while the sun's orbit runs exactly through the larynx. The **24° tilt of the earth's axis** and the **66° polar circle width** are not accidental, but result directly from the construction. The ratio of radius (earth's sphere) to radius (sun's orbit) is root (2)! It forms golden ratios with the distance to the sphere of fixed stars and with the moon's orbit.

" Only in mathematics are there irrefutable proofs based on necessary premises. Therefore, only in mathematics, supported by the laws proper to this science, can man arrive at the truth."

- Roger Bacon

Representatives of the heliocentric world view can only speak of "extraordinary, wonderful coincidence" in complete bewilderment, while in cellular cosmology everything follows from **geometric necessity** . The eight-pointed Templar cross also has its origins in this cosmic geometry. The Tree of Life in its original form also corresponds amazingly precisely to the structure of the cellular cosmos.



Cellular cosmos with simplified/enlarged planetary representation
Graphic by [Steven J. Christopher](#)

The

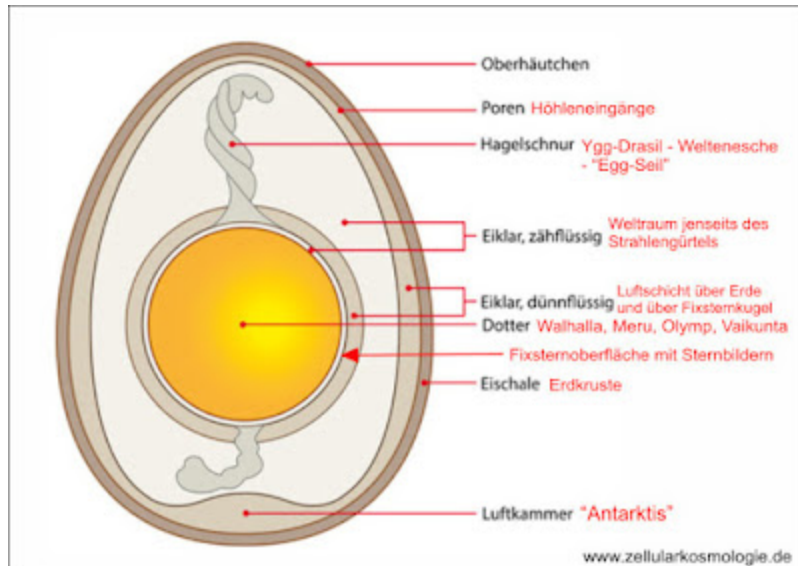
Cell nucleus (yolk) = sphere of fixed stars / celestial bodies (1500 km diameter)

is embedded in a

Plasma (egg white) = space (12740 km diameter)

and limited by a

Membrane (eggshell) = earth's crust (200 km thick)



Light curvature - the key to understanding

In principle, this model only requires abandoning one single assumption: that light propagates in a straight line forever and ever. And then all size and distance measurements are no longer correct.

"First and foremost, mathematics protects us from illusions and teaches us that it is one thing how the things we perceive with our senses are constructed and another thing how they appear to us. This science gives us the most reliable rules; anyone who lets themselves be guided by them need not fear illusions."

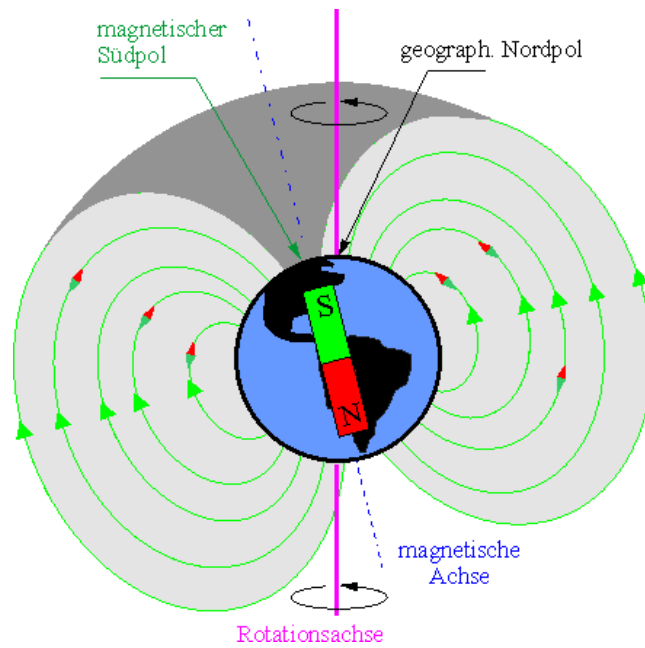
- Leonhard Euler

The distant celestial objects are not where we see them (except when we see them at the zenith), because **on the way to the observer the light beam bends along field line arcs** from pole to pole (as can be seen in the sun's rays in the graphic above). This also explains the day-night rhythm (see sunbeam graphic below).

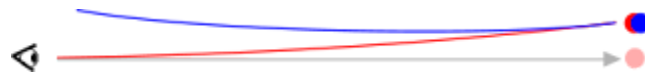
Light is only **the visible part of the electromagnetic spectrum** and behaves like all other electromagnetic fields/frequencies. Here is a common representation of the Earth's magnetic field lines.

Only in the theory of relativity is light attributed mysterious properties ("directional invariance",

"constancy"). The higher the frequency, the stronger the curvature. Incidentally, this also explains why VHF transmitters do not reach as far as medium or long wave transmitters and why, for example, red light can be seen further than blue light. Experiment: look at a red and a blue lamp at night from increasing horizontal distances (from 2 km). The blue lamp disappears next to the red lamp because blue light has a higher frequency and curves more.



Electromagnetic fields - and also light - always run along field lines!



When seen from a distance, blue light disappears next to red light.



From the photo magazine No. 11/1954 we have the photo shown overleaf, which reveals the horizon to be an optical illusion. Dr. Fritz Neugaß writes:

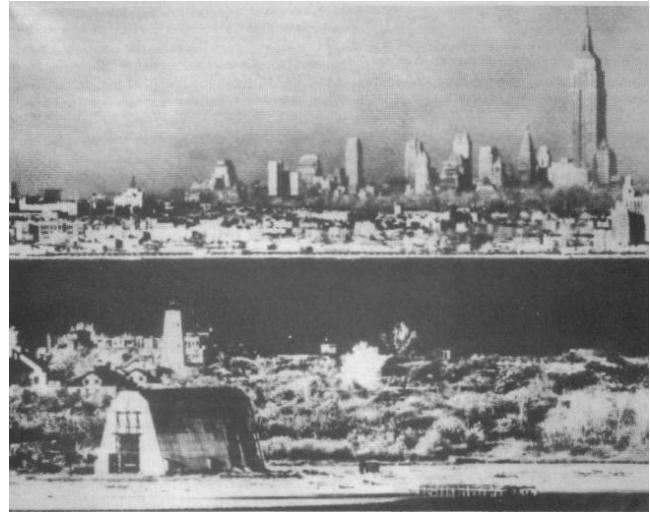
"A NEW TELEPHOTO LENS FROM THE US ARMY".

The optical research

department of the US Army Signal Corps has just released a new camera that is particularly suitable for taking pictures from a distance of 50 km.

The lens has a focal length of 254 cm, is 1 m long, has a diameter of 24.13 cm and is corrected for the use of infrared film. At a distance of 10 to 20 km, it can be used to clearly "analyze" the terrain, to identify weapons, fortifications and transport. The disadvantage of such a telephoto lens is the complete elimination of perspective.

In our shot of the Empire State Building and the Manhattan skyline, the camera is 26 miles away. At the foot of the Empire State Building is a large hotel in Coney Island, but it is only 13 miles from the camera. You would never know from this shot that there are another 13 miles between these two buildings. The Sandy Hook lighthouse in the foreground of the picture is only 4 miles from the camera. The new telephoto lens is attached to a 13 x 18 cm camera that can use film cassettes and roll film. The film rolls each contain 30 exposures, but you can use a built-in knife to cut out exposed film and take it out with the take-up spool. The shortest distance at which the telephoto lens produces a sharp image is 500 m.



Empire State Building photographed with infrared

The image section is 31 m. At a distance of 20 km - the last setting before infinity - the field of view covers about 1000 m. The telescope used to focus has a tenfold magnification and shows the exact image section. When adjusting, the heavy lens, which rests firmly on the tripod, is not moved; instead, only the camera is moved. The whole thing weighs 140 pounds and has to be operated by two people. The camera is transported - like a portable camera - using two handles, at the front and back. It can be set up, adjusted and ready to shoot within 5 minutes."

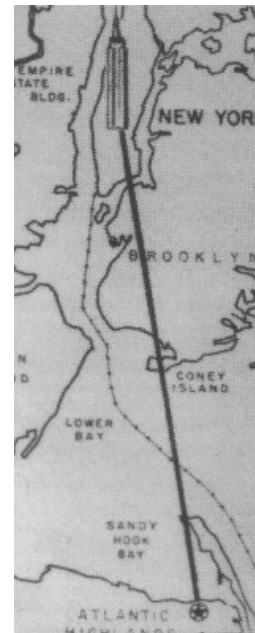


Photo viewpoint
on Sandy Hook (1 m above sea level)

So much for Dr. Fritz Neugaß. When we look at the result of the recording, we can objectively say

1. The camera is located on the beach of Atlantic Highlands and its shooting height is just under 1 m.
2. The camera and telescope are tilted slightly upwards, which proves that the photograph was not taken from an elevated position and that the objects behind the horizon must be higher up.
3. An island 6 km away is photographed in its entirety (top view), as is the 14 km wide inlet behind it and, without any cover, the harbor quays of Coney Island.
4. As if that weren't enough, the image also provides a view of the sea of roofs of the port city behind it, optically melts the Brooklyn peninsula and another arm of the sea, and clearly shows the skyscrapers of Manhattan, which would have had to suffer a sinking of about 130 m if the Earth had been full and the light beam was straight (not infrared!)

In summary, it can be said that the horizon has nothing to do with the alleged spherical shape of the earth, since it can be resolved optically.

However, if our opponents of this world view try to use the excuse that the light beam is bent around the convex earth, we would be grateful for this statement, because this would mean that the Copernican world view would **lose its basis, the straight light beam**. Source: W. Wawruska, "Does humanity need a new world view?"

horizon effect with and without light curvature

From the following comparison graphic it can be seen that optically you get exactly the same result if you assume a **convex curvature and a straight light beam** or a **concave curvature and a curved light beam** .

The horizon effect with the only partially visible ship also has a simple explanation in the Central Committee.

However, this unique photo in the border area of the sunset (taken by Rainer Schulz, Wadden Sea Conservation Station, National Park House, Hafenstr. 3, 25813 Husum) is proof of the concave curvature of the earth's surface, in which the sun does not actually set but rises.

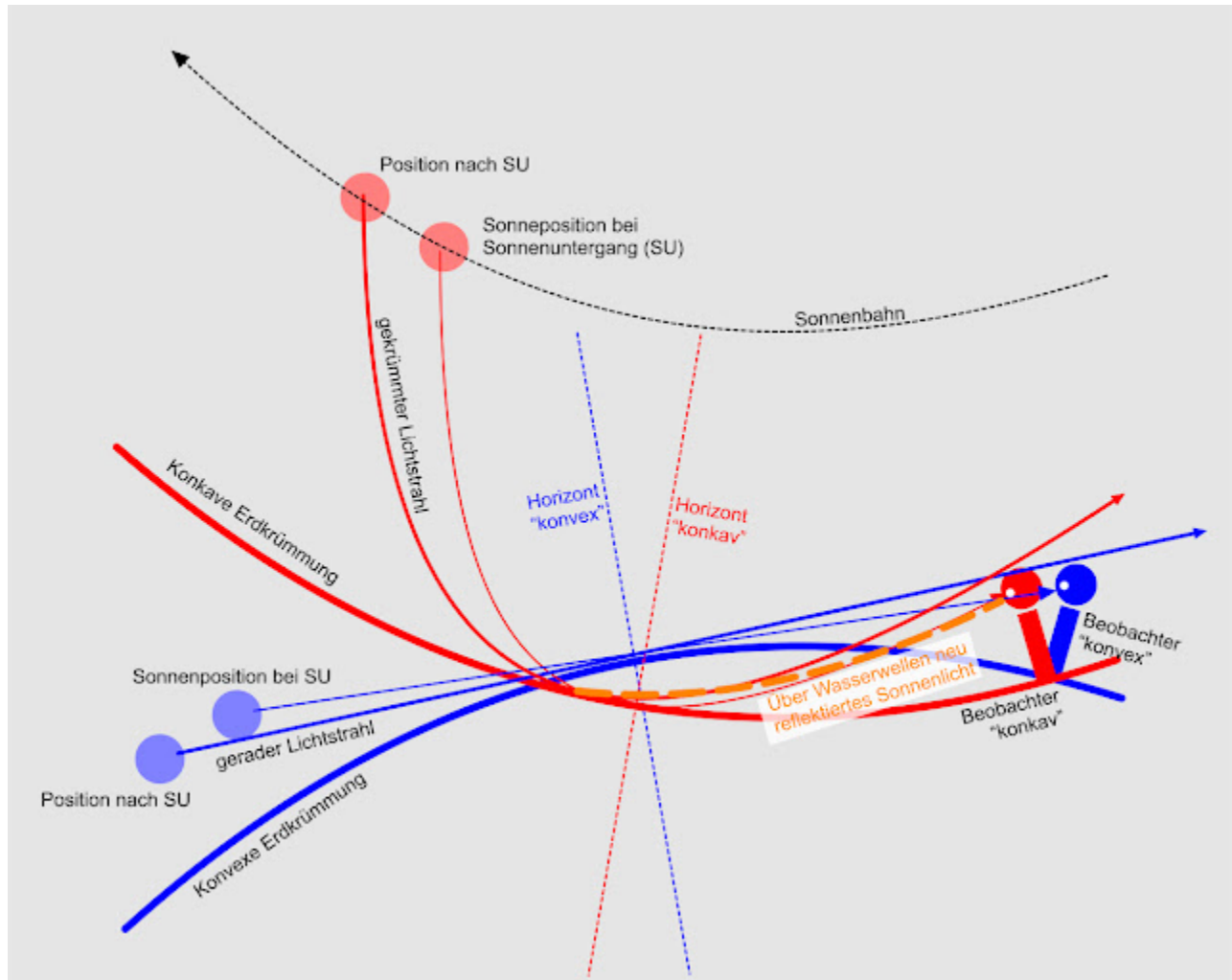


Sunset on the Wadden Sea

R. Schulz writes (emphasis added):

"March 7, 2011 was a remarkably dry, clear day. The sunset was **not marred by any haze or clouds** . It was noticeable that a **"glowing" strip** remained visible for **some time after the sun had disappeared** ."

The strip shows, if not the sun (which has already set a while ago!), then quite clearly the reflective water surface on the horizon. But that would be physically impossible with a convex curvature and a straight light beam. The light would then first have to shine from below onto an "atmospheric layer" and then onto the water, in order to finally reflect from there. However, in the concavely curved model, this extremely rare photo can be explained (see graphic): The rays of the offset sun reach the water surface and reflect off the numerous wave slopes into the eye at a different angle! QED



Light curvature and horizon effect = cellular cosmology

An infrared camera installed 2 m above sea level allows a visibility of up to 66 km ! According to the Earth Curvature Calculator, the target disappeared **291 m** below the horizon. Observation 1: Long-wave waves (infrared / short waves) reach further than short-wave waves (radar / microwave). At the same time, however, a curvature is observed: the lower part of sailing boats disappears behind the water curvature at a distance of just 5 km.

Watch Video At: https://youtu.be/D5lx5_6WGWM

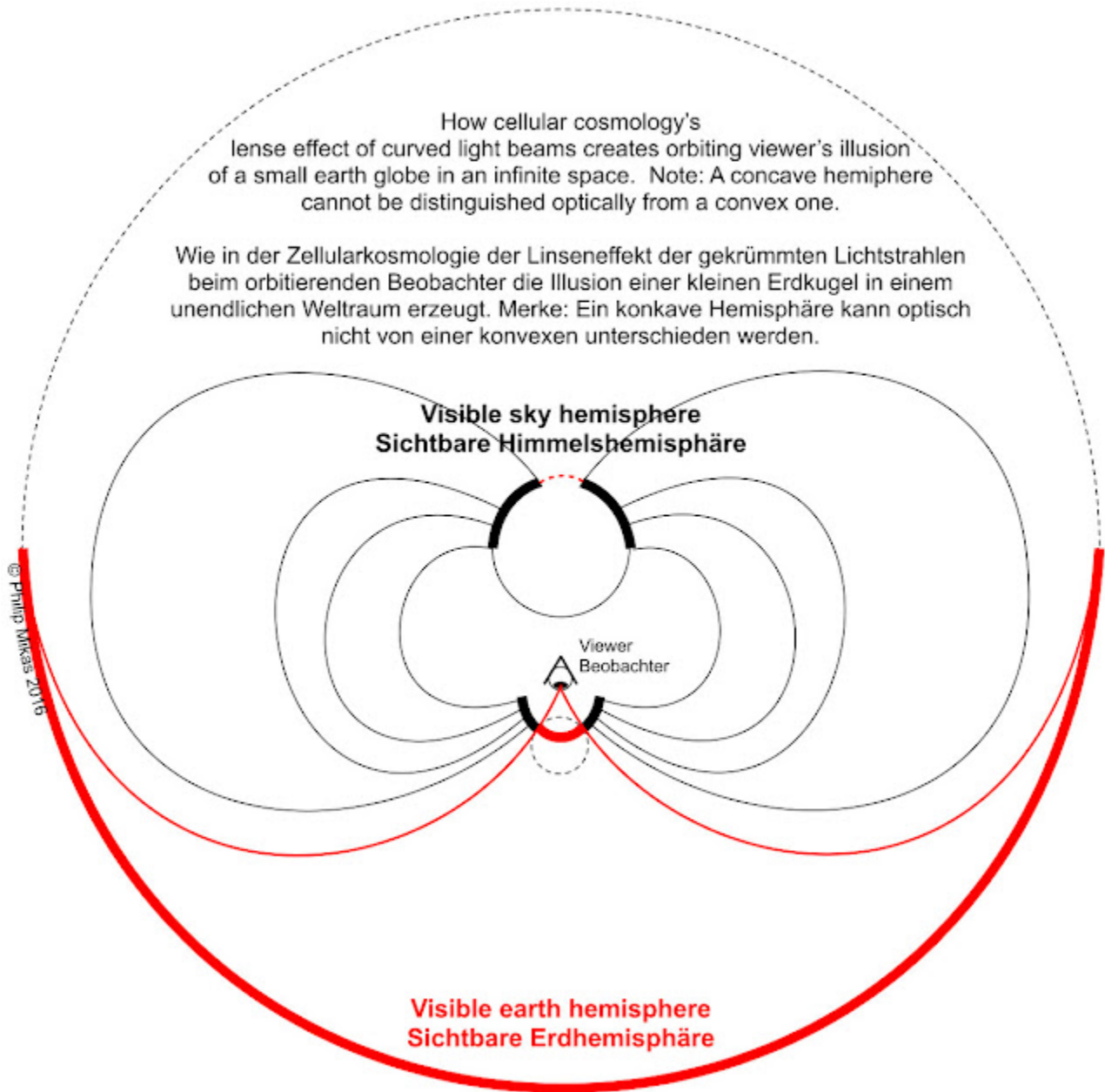
The C



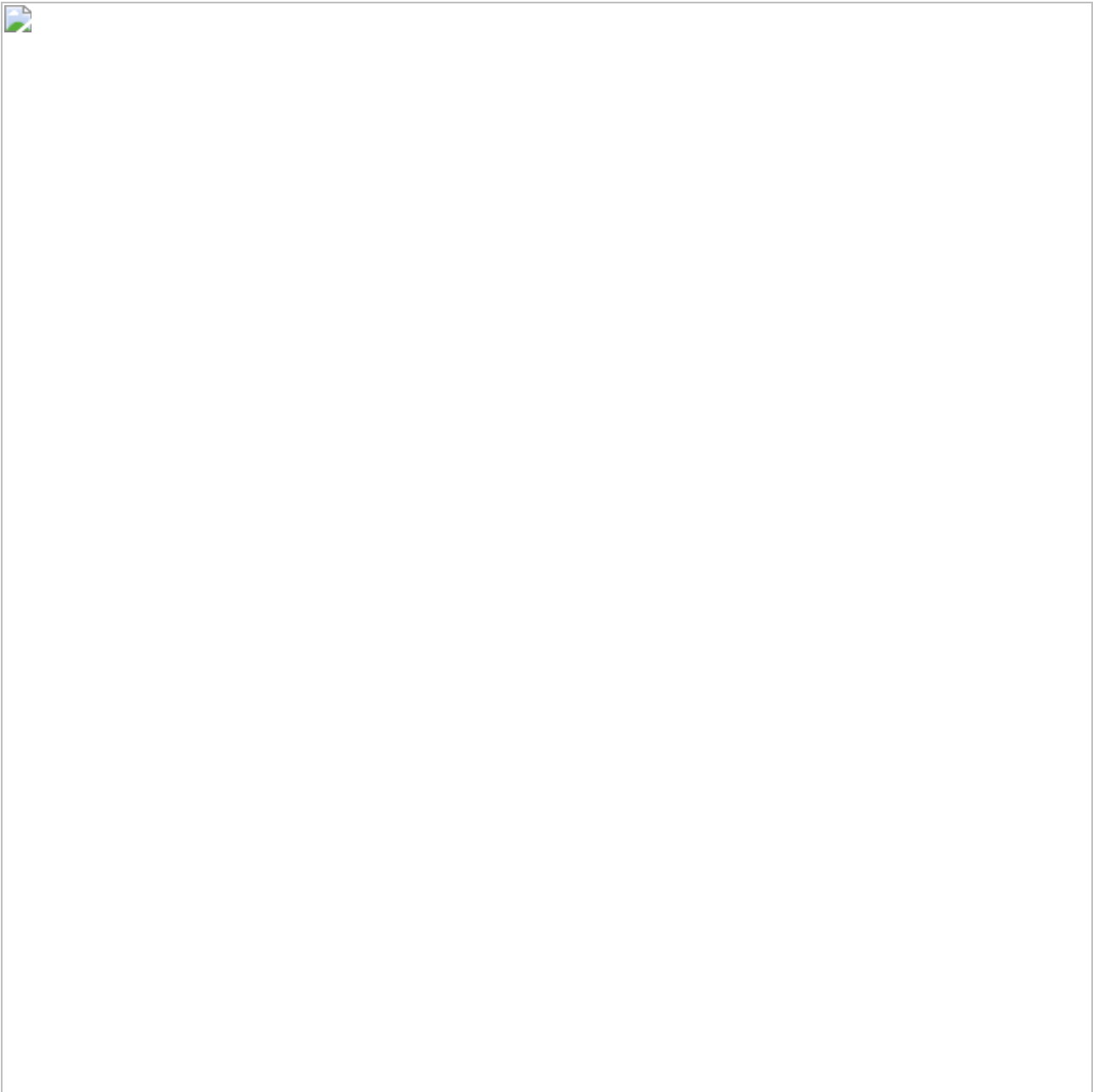
How the Earth Globe Is Created in Space

The propagation of the light waves follows exactly the same laws as with electromagnets (see the graphic above on the electromagnetic field). We have the central sun (fixed star sphere / black sun) in the middle as a source of starlight (black field lines) and the sun (not

shown) as the source of the red field lines, which are first reflected on the earth's surface and - depending on the angle - hit the observer's eye. In the graphic, the observer in space sees the entire hemisphere as a small hollow sphere that is indistinguishable from a convex sphere! This means that all images from space actually show hollow spheres! The observer sees black, star-studded space around the earth's disk and is actually looking at the side of the central sun facing away from him.



Satellite images like this are also easy to explain:



The far side of the moon from a distance of 1.6 million km, camera on board the Deep Space Climate Observatory satellite (DSCOVR), 16.07.2015

Deep Space Climate Observatory Satellite, DSCOVR for short – Source: <http://www.ksta.de/22654734>
©2017

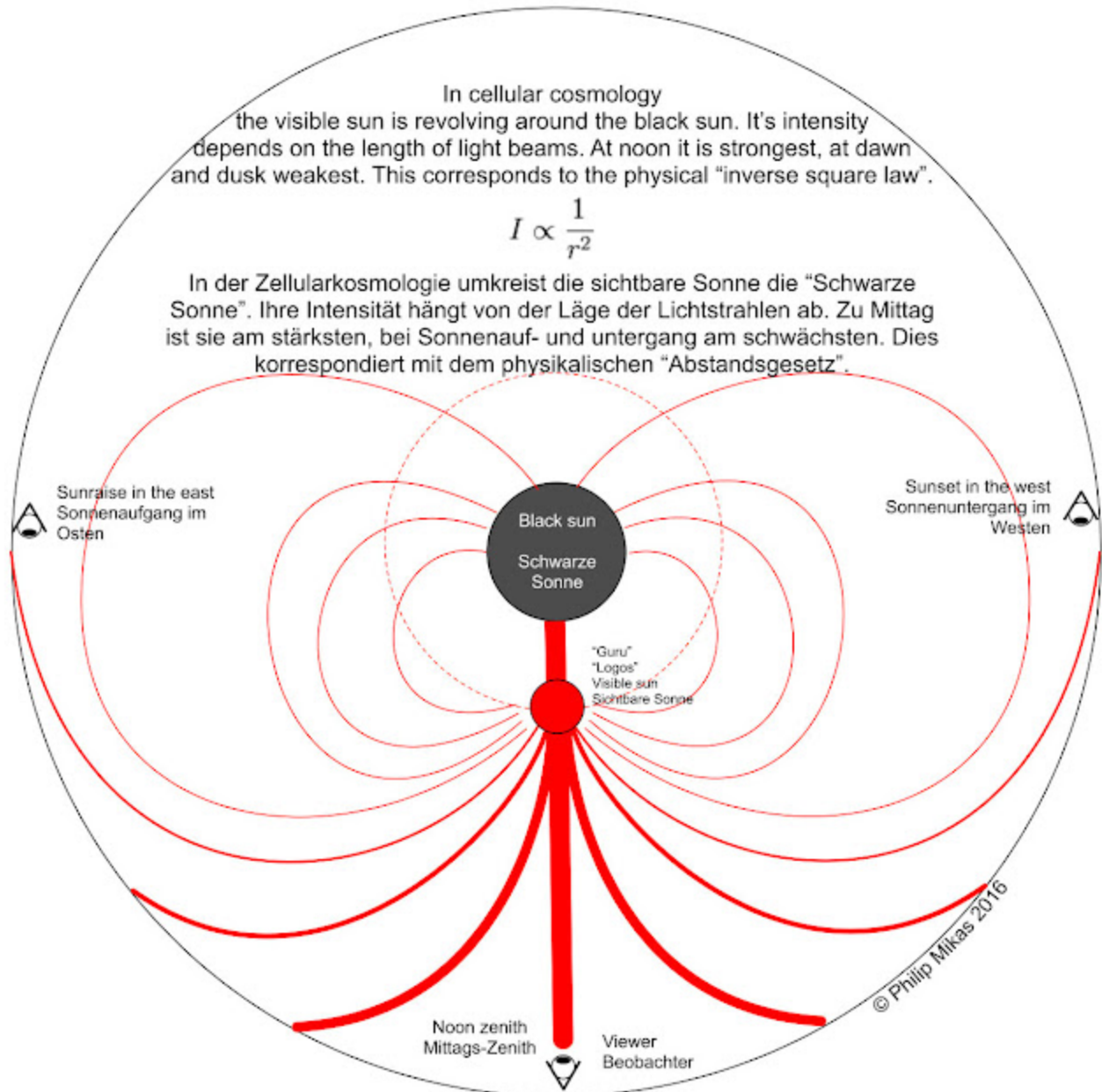
Deep Space Climate Observatory Satellite, DSCOVR for short – Source: <http://www.ksta.de/22654734>
©2017

Deep Space Climate Observatory Satellite, DSCOVR for short – Source: <http://www.ksta.de/22654734>
©2017

Deep Space Climate Observatory Satellite, DSCOVR for short – Source:
<http://www.ksta.de/22654734> ©2017

"Behold the work of God; for who can make straight that which he has made crooked?"

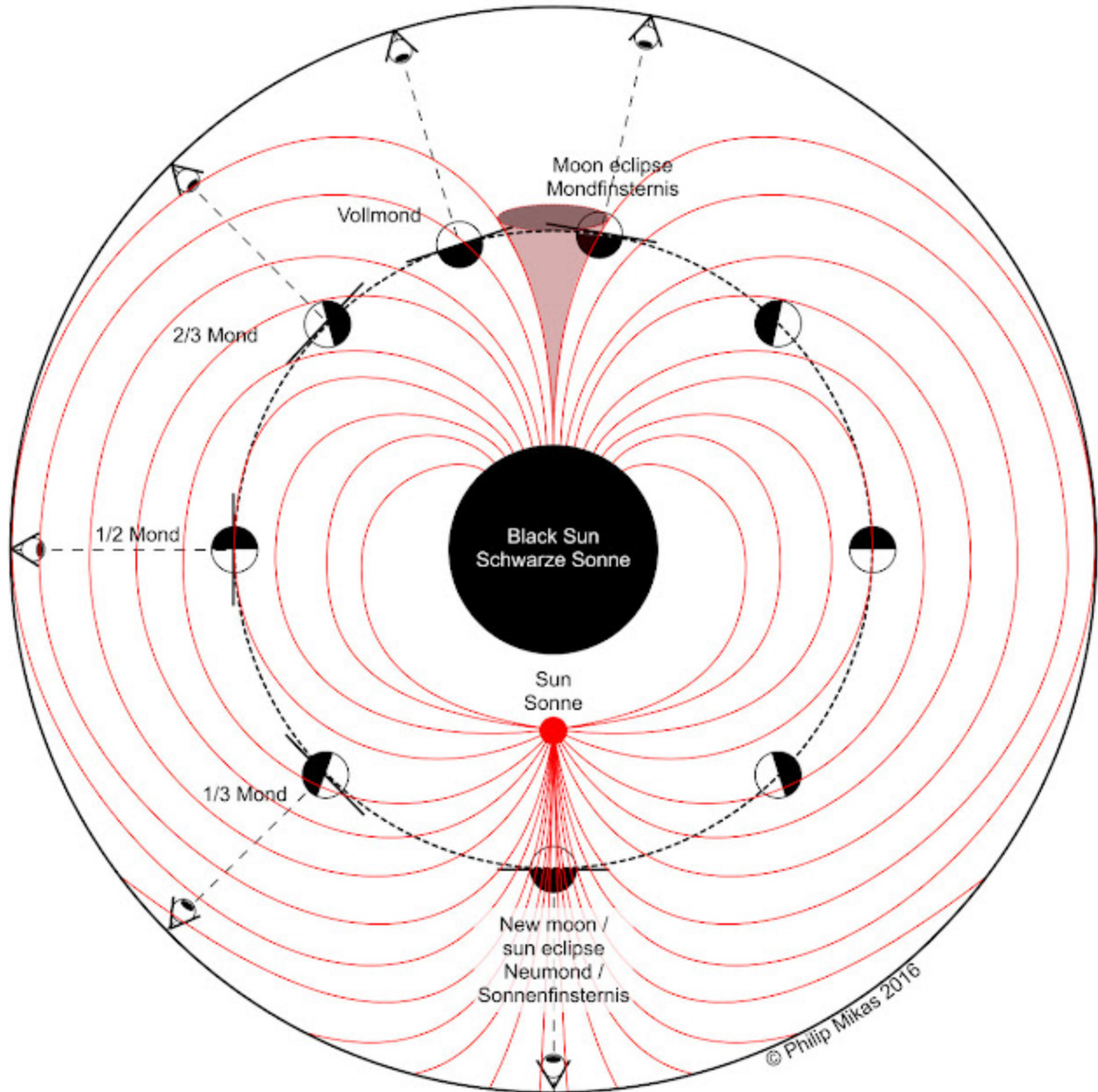
- Ecclesiastes 7:13



Cellular cosmology not only makes it easy to explain sunrise and sunset, but also the strong increase in solar intensity between morning and noon.

lunar phases and lunar eclipses

The phases of the moon in the central constellation are created in almost the same way as in the heliocentric world view (HWB). The lunar **eclipse** occurs when the moon passes through the "night channel" (colored gray in the graphic) that is left out by the light sphere, instead of past it. The diameter of the channel is many times the diameter of the moon.



lunar phases and lunar eclipses

The following explanation is offered in the HWB:

The cause of this "residual illumination" is the Earth's atmosphere. Sunlight that almost grazes the Earth's atmosphere at the day-night boundary is slightly deflected in the atmosphere, similar to a lens, and refracted into the Earth's umbra (see illustration). And because the blue part of the sunlight is scattered more strongly by the air particles than the red part on the long journey through the atmosphere, the remaining light illuminates the moon predominantly in warm colors, like the evening or morning red.

A lunar eclipse is a natural experiment in which the moon acts as a mobile screen in the Earth's shadow. The light captured by the moon tells us a lot about our Earth's atmosphere.

- Leifiphysik.de

But then the question arises whether the normal shadow of the Earth would also darken the full moon compared to the half moon? And whether part of the red light refracted in the atmosphere would also hit the full moon and give it a reddish color?



In the central constellation, the red color of the moon in the night channel is simply caused by the fact that only low-frequency, reddish light reaches it, as it bends less.

Scale-independent structural identity

The term "**cellular cosmology**" should be used quite deliberately for this model, because the **scale-independent structural identity** (fractal self-similarity) is an essential feature of the universe - see also Arthur Young, "The Reflexive Universe". Young was, incidentally, the intellectual father and personal mentor of several well-known thinkers (especially Nassim Heiraman and Stan Tenen).

In reality, all planets, including the sun, are much smaller than expected and rotate around the cell nucleus. The fixed stars, including the Milky Way, are nothing more than a pattern of points of light that no telescope, no matter how large, has ever been able to enlarge into disks.



cell nucleus = radiation source
(holy of holies)

Nuclear envelope = fixed star
sphere (5-16 μm) Nuclear pores = visible stars

Centrosome = sun

Golgi apparatus = lunar sphere

cell membrane = earth's shell

Cell nucleus = radiation source, cell envelope = galaxy thicket,
vesicle/lysosome = planets, membrane = earth's surface

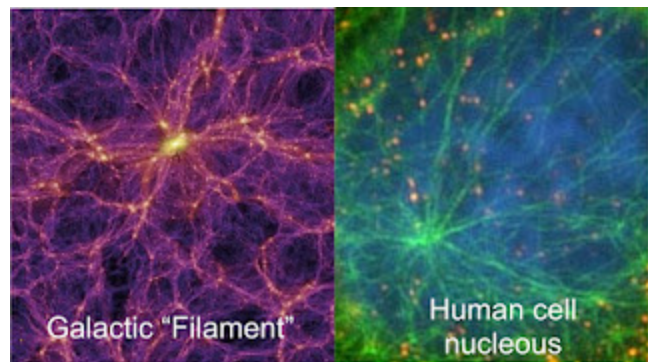
*The cell nucleus, which in mammals typically has a diameter of 5 to 16 μm , is the cell's organelle that is most easily identified under the microscope. It is delimited by the nuclear envelope, consisting of two biological membranes, the inner and outer nuclear membrane, which enclose the so-called perinuclear cistern (width 10–15 nm, strengthened by **microfilaments** - thickness 2 to 3 nm). The total thickness of the nuclear envelope is about 35 nm.*

- Wikipedia

A look into the "most distant galaxy clusters" also shows structures that have exactly the same name: "filaments" (lat: filum, the thread). This would even confirm the fractal structure, because - despite all previous respect for the "infinite expanses" - it is more reminiscent of looking through a powerful microscope. If you compare the "galactic threads" with the framework of a human cell nucleus , you are amazed at the similarity:

Caption on the left:

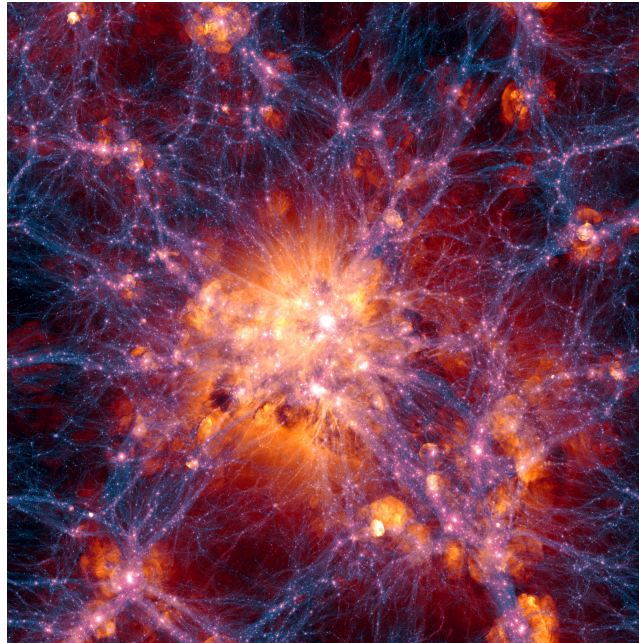
"The matter has structured itself along the filaments, they enclose the huge voids . These are not absolutely empty, but they contain very thin gas - just not the compressed matter that we know from galaxies." - History of the Universe



Caption on the right:

*"An infected cell. The red dots are the HPV virus.
The cell skeleton is shown in green. The cell nucleus shimmers blue.
Image: Florin"
New findings in basic research by Mainz biologists*

Cosmic matter of unimaginable dimensions "structures itself along threads" (filaments)? Whether these are galaxies or molecules is apparently irrelevant to the structural principle. Here is another image of "U1.27" (also called Huge Large Quasar Group, or Huge-LQG for short), a "cosmic superstructure made up of 73 quasars" in the constellation Leo:



This very detailed simulation of large scale structures was created as part of the Illustris simulation. The distribution of dark matter (Voids) is shown in blue and the gas distribution in orange. This simulation is for the current state of the Universe and is centered on a massive galaxy cluster. The region shown is about 300 million light-years across. Credit: Illustris Collaboration



Watch Video At: <https://youtu.be/2EWLoAMH5ts>

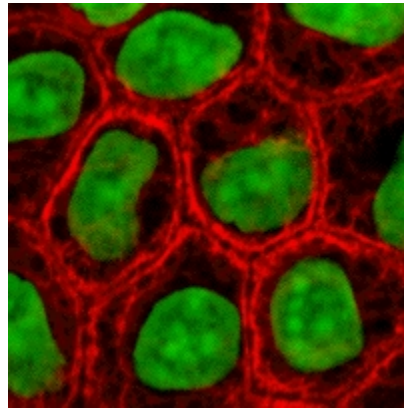
Animated film of the filaments. "**Dark matter** cannot be proven experimentally, but can only be assumed in computer models."
Source: The Theoretical Astrophysics group (TAP) of the Heidelberg Institute for Theoretical Studies (HITS)

And here is another remarkable "cosmic" structure, the "**Crab Nebula**" :

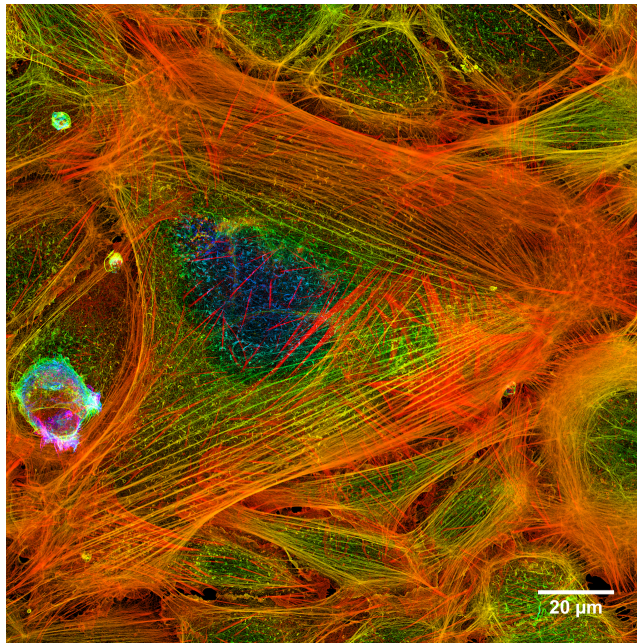
In comparison, human **lung cancer** cells :

Is the **striking structural similarity** with human tissue/cell material just a coincidence? What you see in the night sky at very high magnification is nothing other than the complex, multi-layered cell nucleus surface with its "luminous pores" (stars).

Traditional astronomy encounters a massive scaling problem here (inconsistency of the laws across all orders of magnitude). If mysteriously "clumping" dark matter is essential for cluster formation, but at the same time its composition is completely unknown - what then justifies the preference for the Copernican



Microcosmic cell nucleus surface keratin intermediate filaments in red with "voids" in green.

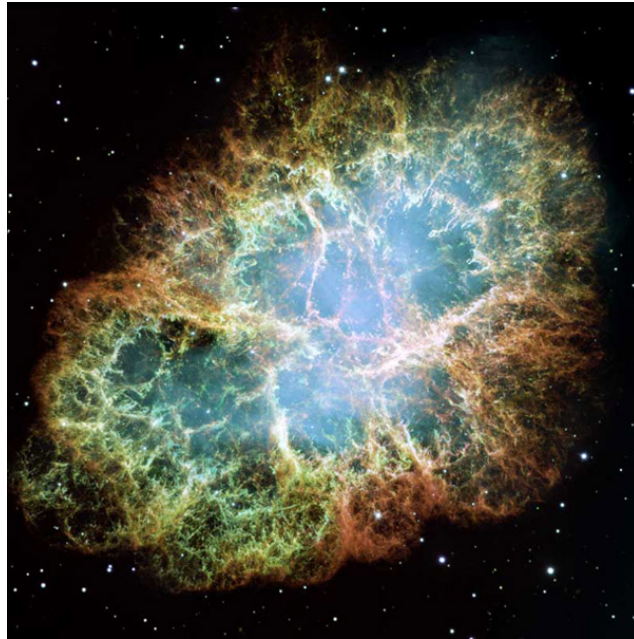


Microfilaments of a cell nucleus - the same structures as on the "starry sky".

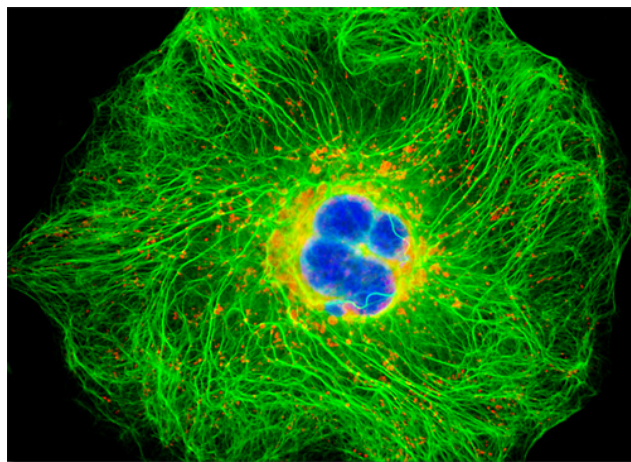
cosmological principle?

Because as many new theories cannot be taught as new (organic!) phenomena are discovered. This in turn corresponds very much with the

almost infinite complexity of the microcosm. In today's age of "fractal self-similar structures" there would be nothing unusual about the statement made by Paracelsus that **"microcosm = macrocosm"** - on the contrary: it would only be consistent. But determining consistencies (simplifications) is an essential result of scientific research, which (according to a definition by the Federal Constitutional Court) aims to find the truth.



This composite image was assembled from 24 individual exposures taken with the NASA Hubble Space Telescope Wide Field and Planetary Camera 2 in October 1999, January 2000, and December 2000. It is one of the largest images taken by Hubble



Fluorescence Digital Image Gallery : Human Lung Carcinoma Cells (A-549)

How big are the sun and planets?

Because of the curved light beam, all the size and distance relationships change! The sun has an estimated diameter of 2.5 km. This is supported by a very strange phenomenon that was observed by chance in 2011: an object approaches the sun, sucks energy from it and then detaches again. An artificial structure of this size could never dock and undock from the sun's surface if the sun had the estimated diameter!



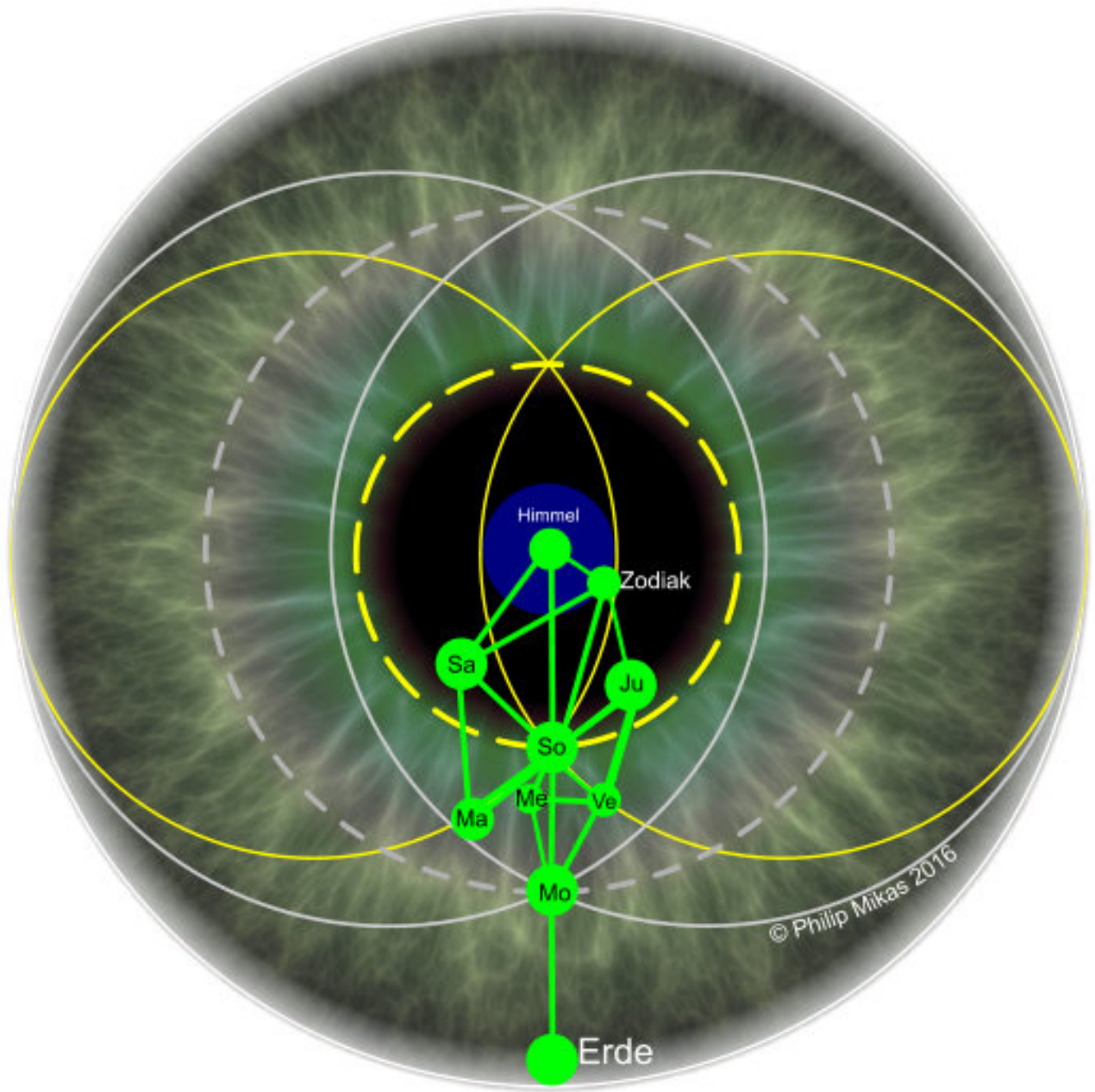
Watch Video At: <https://youtu.be/TIbvXxrvNlk>

Unknown object sucks energy from the sun and then escapes.

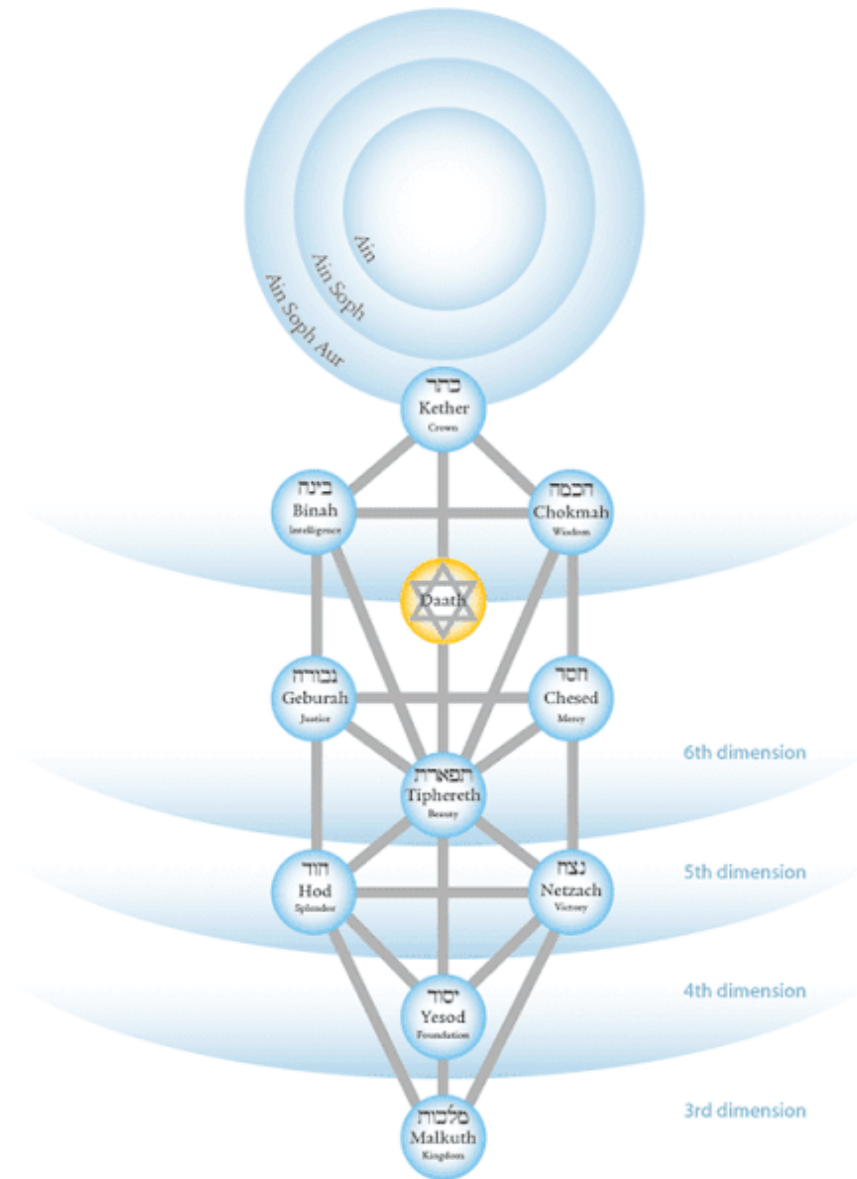
Cellular Cosmology in Mythology

Kabbalah

The Tree of Life (Kabbalah) fits almost perfectly into the structure of the cellular cosmos, especially with regard to the order of heaven - fixed stars - planets - moon - earth.



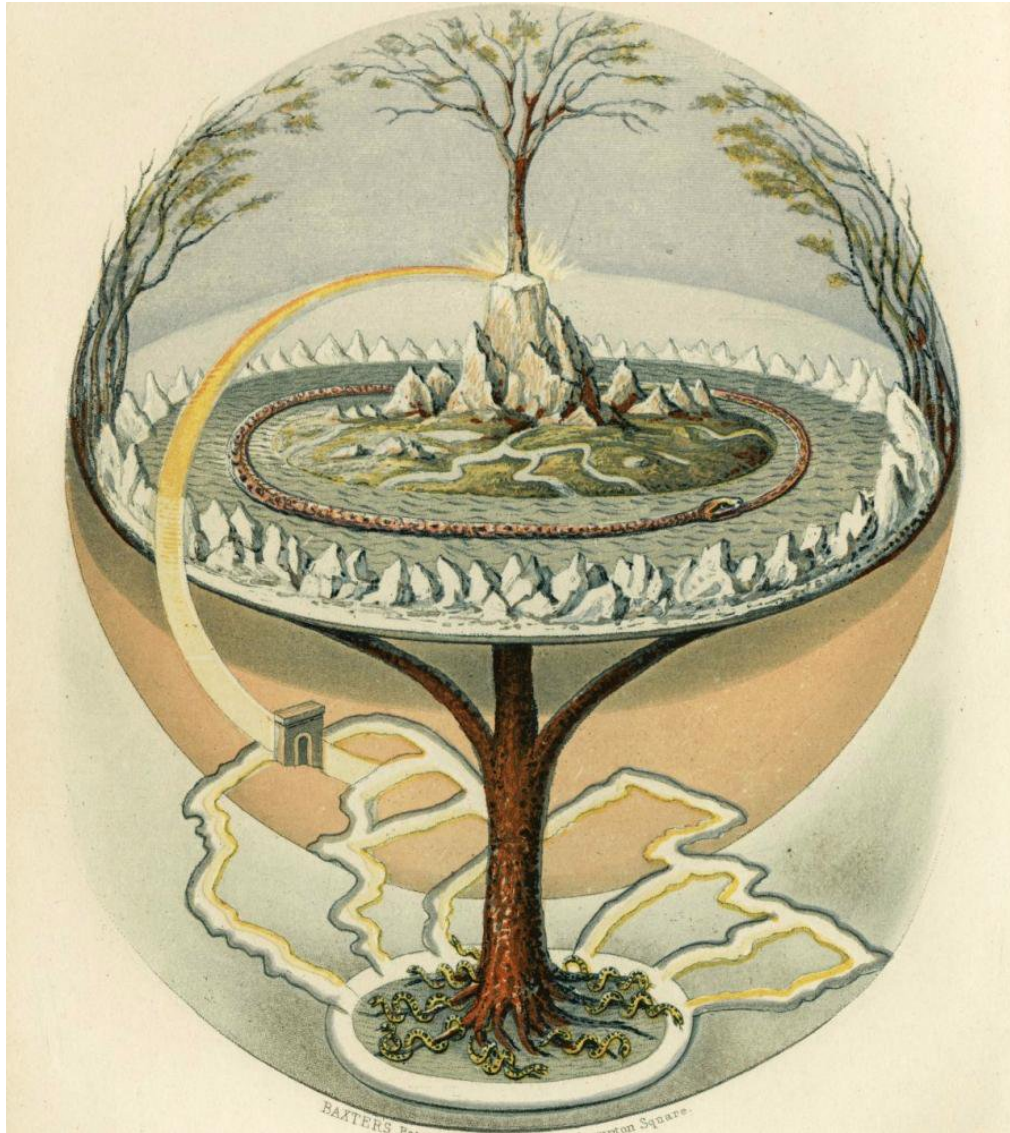
Amazing harmony between human eye,
universe and the **tree of life**



The spheres of the Kabbalistic Tree of Life are arranged concentrically around Ain Soph

Edda

Hardly any worldview of ancient cultures corresponds as precisely with cellular cosmology as that of the Edda .



Yggdrasil the world ash tree = polar axis. No, no proof for the flat earth!

Graphic based on the original description of the Edda .

Midgard, the world of the earthly, is gripped by the Fenris wolf (chaos and primordial darkness) and the Midgard serpent (infinity) biting its own tail . To prevent the wolf's jaws from snapping shut , the gods erected the sword of divine order , which also symbolizes the axis of the world. From its center , piercing the roof of Valhalla, rises Yggdrasil, the world ash that overshadows everything . It is the archetype of earthly, sacred groves, trees and pillars. In its branches are eagles (sun) and hawks (moon). At the trunk of the tree, in the middle of the world, is the place of judgment of the gods. It is surrounded by Irmin's or Wodan's chariot and the Wendelmeer. Inside Valhalla there is a large hall in which Irmingott (all-god), the

"ruler of all things", reigns. In its splendor lies the field of immortality "Odainsakr". The Irminsweg (Milky Way) leads up to the top of the Götterberg .

English: Midgard, the world of matter is clutched by Fenriswulf (chaos and primordial darkness) and the tail biting Mitgard snake (infinity). To prevent the cleft palate from snapping, the gods have erected the sword of divine order, which symbolized the world's axis at the same time. Out of it center, piercing Walhall's (heaven's) roof, emerges Yggdrasil, the all overshadowing World Ash Tree . It is the archetype of worldly holy trees, columns and bosks. In its branches reside eagle (sun) and hawk (moon). At the tree's root, in the middle of the world, the court site of the gods. It is orbited by the chariot of Irmin or Wodan and the helix sea (Wendelmeer). Inside Walhall there is a big hall in which Irmingott (Allgott), the "disposer of all things" presides. In his splendor lies the field of immortality (Odainsakr). The path of Irmin (milky way) leads to the height of the Gods mountain

Egyptian creation myth

Osiris is the inhabitant of "heaven", which is supported on eight sides by "female" opposing forces.



Egyptian creation myth: Earth (Geb) and heaven (Nut) separate. The five planetary children Osiris, Isis, Horus, Seth and Nephthys float/orbit between them . From: EA Wallis Budge, The Gods of the Egyptians Vol. II

*"In the beginning, the god Atum created the world, people and gods from himself. The first pair of gods that he created were Shu and Tefnut, the air and the moisture. Shu and Tefnut gave birth to Geb and Nut, the earth and the sky. **These two loved each other deeply and embraced each other closely, but this union of heaven and earth left the people on earth with no air to breathe.** The sun god Re instructed Shu to separate the two and he stood between them. But it was already too late and Nut was pregnant. The angry Re forbade her to give birth to her children on one of the 360 days of the year and so Nut asked the god of wisdom Thoth for help. In a board game Thoth won 5 additional days from the sun god Re, which were added to the year and on which Nut could give birth to her children: Osiris, Isis, Horus, Seth and Nephthys. Above, marked by the stars on her body, is the sky goddess Nut. She touches with hands and feet the earth - these are the four cardinal directions. Down on the ground, with reeds on his body, is the earth god Geb. Between the two kneels the air god Shu and separates them from each other. On the legs of Nut the barque of the sun god Re (in the middle, with a falcon's head) travels up into the sky, on the other side it travels down the arms and is received by Osiris in the underworld. Sia and Maat - knowledge and truth - are also sitting in the barque." - Arbabat*

The optical illusion of the sphere of fixed stars spanning the horizon is taken into account by the arch that the female night (Nut's body) forms over the male, solid earth foundation (Geb). If you were to mirror the concave shape of Nut horizontally into the convex shape, you would have exactly the sphere of fixed stars in the center of the sky, around which the sun orbits!

Vedic cosmology

In the Surya Siddhanta , a part of Hindu astronomy from the 6th century, 90 statements are made on the nature of the cosmos, which are commented on in the translation on pages 245 to 254. Of these, only points 29 to 32, 43, 46, 54 and 55 are highlighted, because they **confirm the essential structure of cellular cosmology in detail !**

29. This Brahma-egg is hollow ; within it is the universe, consisting of earth, sky, etc. ; it has the form of a sphere, like a receptacle made of a pair of caldrons.

30. A circle within the Brahma-egg is styled the orbit of the ether (*vyoman*) : within that is the revolution of the asterisms (*bha*) ; and likewise, in order, one below the other,

31. Revolve Saturn, Jupiter, Mars, the sun, Venus, Mercury, and the moon ; below, in succession, the Perfected (*siddha*), the Possessors of Knowledge (*vidyadhara*), and the clouds.

32. Quite in the middle of the egg, the earth-globe (*bhūgola*) stands in the ether, bearing the supreme might of Brahma, which is of the nature of self-supporting force.

43. In both directions from Meru are two pole-stars (*dhruvatārā*), fixed in the midst of the sky : to those who are situated in places of no latitude (*niraksha*), both these have their place in the horizon.

46. Hence, owing to his exceeding nearness, the rays of the sun are hot in the hemisphere of the gods in summer, but in that of the demons in winter : in the contrary season, they are sluggish.

54. Owing to the littleness of their own bodies, men, looking in every direction from the position they occupy, behold this earth, although it is globular, as having the form of a wheel.

55. To the gods, this sphere of asterisms revolves toward the right ; to the enemies of the gods, toward the left ; in a situation of no latitude, directly overhead—always in a westerly direction.

How far, in verse 46, a true statement is given of the cause of the heat of summer and the cold of winter, may be made a matter of some question : the word which we have translated "nearness" (*āsannatā*) has no right to mean "directness, perpendicularity," and yet, when taken in connection with the preceding verse, it may perhaps admit that signification. The second chapter shows that the Hindus knew very well that the sun is actually nearer to the whole earth in winter, or when near his perigee, than in summer.

29: The entire visible universe is contained in a hollow, spherical egg, a container made up of two half-shells (hemispheres). 30: The ether (*vyoman*) circulates within the egg. Within the ether (sea) the stars (*bha*) circle, one above the other, in the order (31.) Saturn, Jupiter, Mars, Sun, Venus, Mercury and Moon. Below them (on the periphery) are the holy and knowledgeable people (*siddhas* and *vidyadhara*s), as well as the clouds. This corresponds exactly to the **Kabbalistic tree of life (see above)** . Kabbalistic knowledge is said to have flowed into Greek and Egyptian culture from Melchizedek (Krishna) via Abraham (his son Brahma). 32: In the middle of the cosmic ice (the universe) and the etheric sea floats the spherical celestial fortress "Bhugola", which is the seat of the almighty creator god Brahma (not to be confused with Brahman, the formless!). Bhugola carries itself through its own (radiance). 43: On the axial poles, seen from the center of Meru (Meru is identical with Bhugola, or rather its center), are the polar stars, each of which rests in the center of the

rotating sky. The observer at the equator (without latitude) sees the polar stars (due to the curvature of light) directly on the horizon. 46: Because the sun approaches the half-shell of the divine beings in summer, its rays are hot there in this season (while they are hot in the winter in the half-shell inhabited by the demons). In the opposite season they are sluggish/weak (because they are further away). 54: Because people are so small, they perceive the Bhugola celestial fortress as a wheel/sky, even though it is spherical (this refers to the deceptive magnification effect of the curvature of light). 55: For the gods (the inhabitants of the Bhugola celestial fortress), the ether with the stars rotates clockwise. For the enemies of the gods (from a polar perspective, the earthbound beings), it rotates counterclockwise. Anyone standing directly on the equator sees the stars moving directly above them (from east) to west. The commentary on the translation also states: "The question remains as to what is meant by 'proximity' in point 46. It does not mean 'directness' or 'vertical', although one could assume this in the context. The second chapter, however, shows that the Hindus knew very well that the sun is closer to the earth as a whole in winter than in summer." However, this attempt at reinterpretation in the sense of heliocentrism fails miserably because the distance differences of a few thousand kilometers would not be mathematically significant in relation to the total distance of the sun.



The Egyptian Djed Pillar in the Earth's Axis Tilt Angle

Djed pillar - the pole axis

"Djed is the most important symbol of the union of all poles and connects with the transcendental reality of the One. It is the axis of the microcosm and the macrocosm. As a cosmic axis, Djed is the "cylinder", the pillar of light that connects earth and sky ... Behind the North Star is the realm of the gods and the highest dimensions of being ...

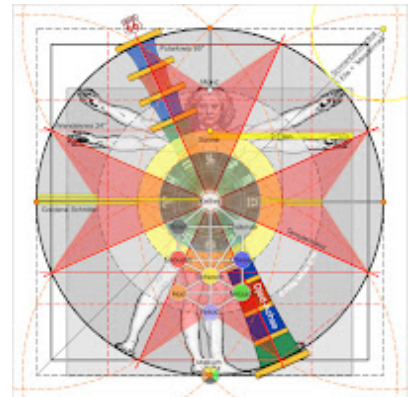
The pillar of burning light, which connects heavy matter with pure consciousness, is the means for physical transfer to a higher existence, for liberation from the real world to achieve eternal life, the ladder (depending on the translation also stairs, steps, ramp) for the resurrection of the chosen ones. This ladder is called Jacob's ladder or ladder to heaven by Christians and Djed by Egyptians...

The Jacob's Ladder (Stairway to Heaven)

The royal burial chamber could be the heart of the Djed structure of the Great Pyramid, a kind of orgone chamber from which one can dare to jump into heaven. Source: Soscollemaggio

With the help of cellular cosmology, this mythological meaning becomes clear in its very concrete sense. In the graphic overview at the beginning of this text, the Djed pillar is drawn at the same 24° angle of inclination as the polar axis.

In ancient Memphis, the festival of the "Erection of the Djed Pillar" or "Erection of the Djed" developed. With the help of the respective priests, the Pharaoh himself carried out this by means of ropes. This was intended to ensure a long duration of the kingship. The resurrection of the god Sokar (Osiris) was celebrated here.



Inclined polar axis in the central axis

The analogy to the "resurrection" of Christ is obvious. The King's Chamber of the Great Pyramid of Giza is said to be the upper part of a huge Djed pillar, in which sound vibrations are concentrated and resonated in such a way that mystical experiences are possible. Even Alexander the Great and Napoleon are said to have lain in the stone sarcophagus, as well as Moses and Jesus himself.

In occultism (freemasonry), May Day is the most important holiday of the year. The international call for help in air traffic ("Mayday") may reflect this, just as the occult number combination 9/11 is the emergency number in some countries. The Djed is erected in Bavaria as a maypole. The women dance around the phallus analogy hung with eggs. The Bavarian Maypole Festival thus goes back to the ancient Egyptian festival of erection.



Ode to Joy

In his Ode to Joy, Friedrich Schiller, the greatest German poet and philosopher (alongside JW v. Goethe), gives the residence of the "Father" exactly as it is defined in cellular cosmology:

Embrace yourself, millions!

This kiss from the whole world!

*Brothers! Above the starry sky
a dear father must dwell.*

Embrace yourself!

This kiss from the whole world!

Joy, beautiful spark of the gods!

Daughter of Elysium!

Joy, beautiful spark of the gods! Spark of the gods!

You fall down, millions,

do you sense the creator of the world,

do you sense the creator of the world,

He must sit enthroned above the stars ,

He must dwell above the stars

- Friedrich Schiller, Ode to Joy



Schiller says "above stars" and describes the starry sky as a "ceiling" in the immediate vicinity. If they were infinitely far away, how would a father convey his love to his children? And if the world is not a disc but a sphere (which Schiller certainly already believed), and if God, on the other hand, is majestically "enthroned" and not racing around the globe, then for the sake of equal treatment of the rest of humanity, only one constellation remains: He is enthroned, rotating, but centrally, i.e. in the middle. For this to happen, however, everyone must be arranged around him (without rotating with him).

It is not to be assumed that Schiller knew cellular cosmology, but his incomparable heart and his extremely sharp mind must have told him - just like his best friend and companion JW v. Goethe - that there was something wrong with the Copernican world view and that the ancients could not have been completely wrong with their naive view.

***The Tower of Babel still haunts,
they cannot be united!
Every man has his worm,
Copernicus his.***
- JW v. Goethe

That is the world... it is hollow within." (Faust)
- JW v. Goethe

***Whatever the case may be, it must
be written: I
curse this accursed polterammer of the new world creation,
and some young, intelligent man will certainly
arise who has the courage to oppose this general, crazy consensus." - JW v.
Goethe (complete works in 40 volumes, Cottascher Verlag, 1858, volume 40, p. 296.)***

The Nordic "Valhalla", the Indian mountain "Meru" and the ancient Greek Olympus - they are all located in the center, in the middle, but still above the vault of heaven.

*According to the belief of the ancients, Olympus formed the high center of the earth's disk. From Olympus, they believed, the immortal gods sometimes descended to mortal men, until a later opinion placed the dwelling of the gods above the vault of heaven, from which they could overlook the earth's disk through a wide opening in the vault, next to which stood Jupiter's castle and the palaces of the other deities. According to this idea, **the name Olympus was often used instead of heaven**, and generally referred to the dwelling of the gods.*
- AH Petiscus, *The Nature and Meaning of the Gods of Classical Antiquity*.



When Heaven and Earth Parted

In cellular cosmology, the membrane and the core initially formed a unit. The membrane was inflated by the intensifying radiation and the rotating "macrocosmic electron spin". See also the "[Expanding Earth](#)" theory.

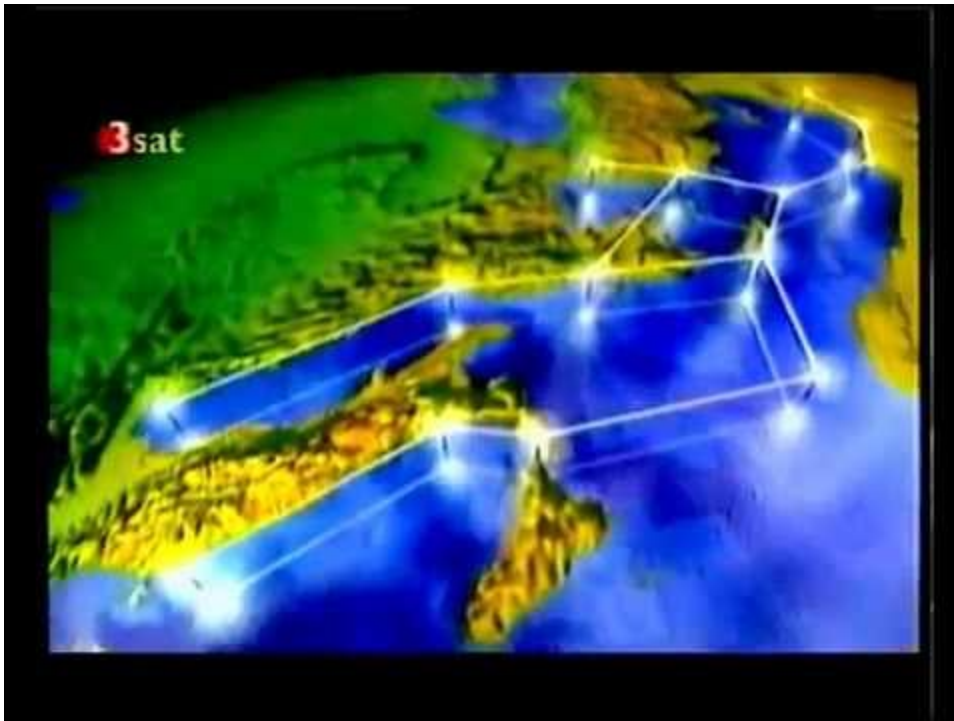
*"And We have built the heaven with power
, and We will surely expand it."
- [Koran 51:47](#)*

In [Koran Sura 21:30](#) ("The Prophets") the Egyptian creation myth is also confirmed:

*"Have those who disbelieve not seen **that the heaven and the earth were one solid mass (ratq), then We separated them** and made every living thing out of water? Will they not then believe? And We have made the sky a roof, secure (so that the devils cannot approach it)... And it is He who created the day and the night and the sun and the moon, **each floating in its course (falak).**"*

Here the sun and moon stand side by side on equal terms. Both have their own orbits. That could not be said if the earth were to orbit the sun. The Koran's confirmation of the Egyptian creation myth and the expanding earth theory means that it does not describe a heliocentric world view.

On the contrary: the fact that heaven and earth must once have been a congruent unit is also proven by the incredible discovery of the German amateur astronomer Kai Helge Wirth , who simply could not imagine that the constellations had been determined in the way they have been handed down since time immemorial out of pure imagination. So he playfully tried **to align the constellations with the coastlines of the earth's surface**. And lo and behold: he got astonishing results right away!

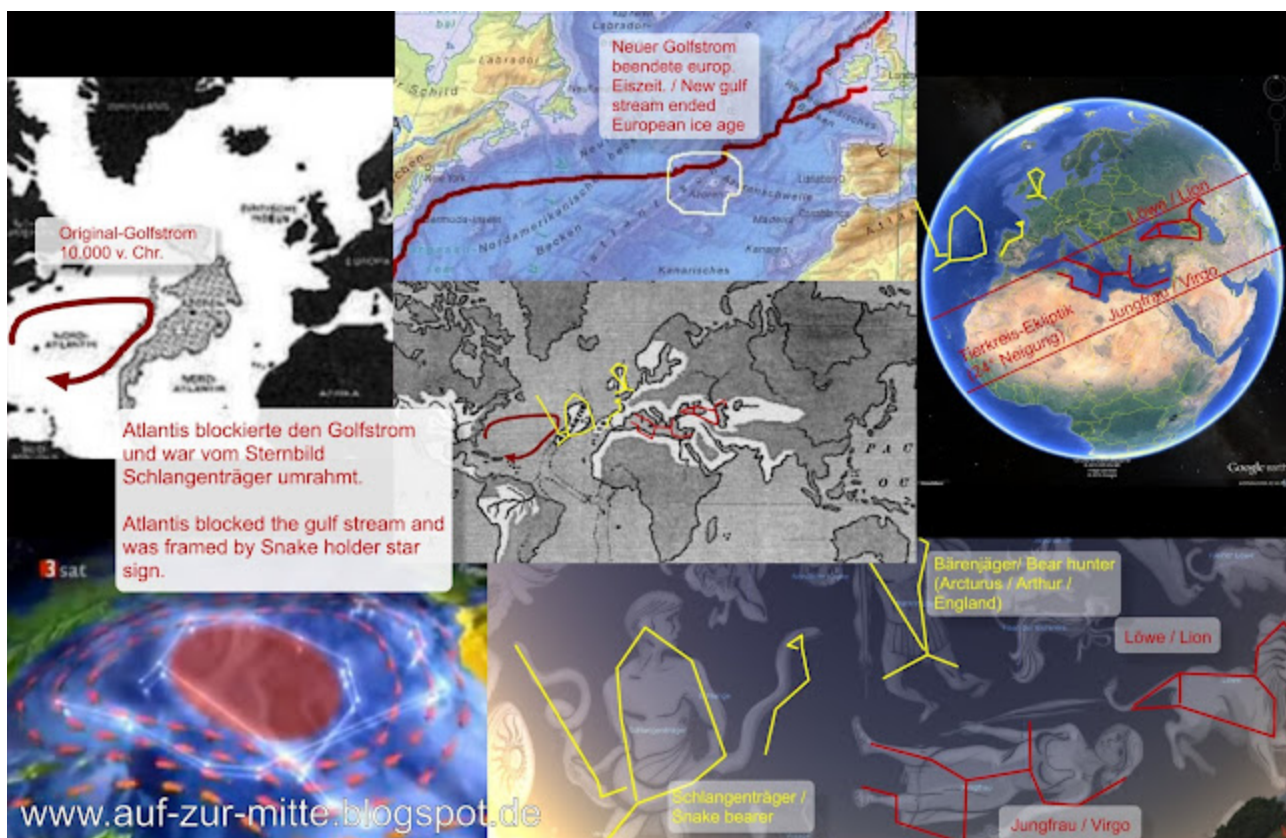


Watch Video At: <https://youtu.be/--270TsY9hw>

To explain this fascinating correspondence, Wirth assumed that the sailors were looking for a "guiding aid" so that they didn't have to remember the coastline. This was also confirmed by an experimental sailor. However, one then wonders whether it is really easier to remember the signs of the zodiac (and then not make any mistakes when transforming them to the earthly course) than the coastline itself. Anyone who knows **cellular cosmology, the expanding earth theory, the Egyptian creation myth and the 21st sura of the Koran** only needs to put two and two together to understand the true reason for the correspondence of "As in heaven, so on earth": **Heaven and earth were once one!**

Atlantis in the constellation of Ophiuchus

An interesting conclusion from Wirth's claim that the constellations all have to do with coastlines can be applied to the constellation of Ophiuchus. If you leave it roughly the same size as the constellation of Virgo in the Mediterranean, and also in the same relative position to it, then Ophiuchus would be above the Azores, i.e. beyond Plato's "Pillars of Hercules". The left side of Ophiuchus must have bordered on an island - Atlantis! The subcontinent acted as a barrier to the Mexican Gulf Stream to the east. When Atlantis sank around 10,000 BC , the Gulf Stream continued to flow to Europe, where the Ice Age ended at the same time. The strange and dangerous migration of the eels to Europe can also be explained by the abrupt change in the Gulf Stream. The almost seedless banana is also an indication of an advanced civilization that spread this unique cultivated plant worldwide before the country of origin sank along with the seeded original banana.



Atlantis and the constellation of Ophiuchus

The graphic shows the constellations of the Bear Slayer, Ophiuchus (yellow), Virgo and Leo (red). With only slight shifts (and almost no twisting), the Bear Slayer (Arcturus) fits England (which also forms an excellent analogy to England's King Arthur legend), the Ophiuchus fits Atlantis (which is said to have sunk due to excessive black magic), Virgo fits the Mediterranean and the Leo fits the Black and Caspian Seas. The twelve signs of the zodiac are arranged in the zodiac, which is inclined by 24° with the ecliptic . The shifting of the

individual constellations, which is necessary to adjust them to the original coastlines, is probably related to the expansion of the earth's shell, during which the original congruence of heaven and earth was somewhat distorted.

Based on these countless correspondences alone, cellular cosmology would already be proven - at least on a philosophical, epistemological level.



fundamental cosmological experiment

The most famous experiment to determine the correct cosmology was the straight-line path-laying experiment by UG Morrow and CR Teed in 1897, Naples Beach. It consisted of the mechanical construction of an absolutely horizontal straight line, the course of which was compared with the curvature of the ocean surface. The [animated video](#) by graphic artist Steven J. Christopher describes the extremely complex experiment in detail at the time, and also deals with the usual objections to the result.

Watch Video At: <https://youtu.be/2linxfgwR0w>

The author has long thought about a simplified curvature measurement. Rolf Keppler plans to carry out a measurement using a helicopter and laser gyroscope by the end of 2016. The main problem with such experiments is repeatability. The author has therefore considered an indirect proof, namely by measuring the rotation of the earth. The presence or absence of this has equally profound cosmological consequences. The angular momentum of the earth had not yet been included in calculations (e.g. in the famous falling experiments).



Before, it was not necessary, because nobody doubted that the earth was at rest, and afterwards it was simply no longer considered necessary, because rotation played no role in daily life and only had to be "assumed" for certain explanations and calculation models.

The central cosmic rotation does not require any external rotation of the earth (everything revolves around the center). Nevertheless, it explains all phenomena such as day and night, ebb and flow, and the seasons.

coordinate transformation

All satellite and planetary orbits can be transformed from the prevailing solid sphere model into the cellular cosmos by a simple circular reflection.

What is straight on the outside becomes a circular path on the inside.

Prof. Roman U. Sexl (Chair of Theoretical Physics, TU Vienna, * 19.10.1939, † 10. July 1986) liked to use this phenomenon as a descriptive didactic to show that our self-evident world view is not so easy to prove in practice.



*Professor Sexl began to present the hollow earth theory to his students. They became very thoughtful, however, when they were asked to use their knowledge of physics to comment on this alternative world curiosity in order to refute the statements of the so-called hollow earth theory. Professor Sexl continues: "The unanimous rejection is soon justified by **a number of recurring objections** . The following problems are usually raised: - How do day and night arise? - How does the horizon come about? - How can gravity be explained? - How can the smaller sun produce the necessary energy? - What happened during the flight to the moon? - Don't the images of the earth from space clearly show a solid sphere? This dialogue, which can refute all of the students' objections to the new world view, usually lasts about one to two hours. The mood in the lecture hall fluctuates between resignation and indignation. Years of studying physics do not allow one to rule out such a seemingly senseless claim that the earth is a hollow body and encloses what we experience as the universe on empirical grounds in just a few minutes. Everything that previously appeared as proof of the Copernican theory now becomes proof of the hollow spherical earth as the form of the cosmos. If it is true that the usual world view of physics has been experimentally proven, **then the same experiments have now also proven the hollow earth theory**. The empirical world view, which has become second nature to the physics student through his work in practical courses and laboratories, is beginning to falter. If theories are based on experiments and follow from experiments, then the hollow earth theory suddenly follows from the same experiment."*

- Roman U. Sexl, lecture at the general meeting of the German Association for the Promotion of Mathematical and Scientific Education, 1983 in Tübingen.

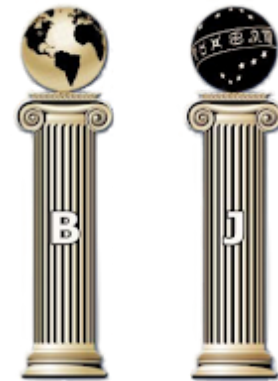
Planetary Orbits in the Heliocentric and Geocentric Worldview

The dimensions of the cellular cosmos follow a strict geometric construction and correspond to the columns of Solomon's Temple, as well as the proportions of the human body

The earth's radius AE determines the size of the globe and the circumsquare. The decisive value is the radius of the sun's orbit E-So, the apex of which is defined by the radius AB. The moon's radius is determined by the intersection point between the WEZ line and the vertical through S. The WEZ line runs through E and the intersection point of the horizontal through So with the circle. The zodiac radius (nuclear membrane) is the perpendicular from E to the diagonal, the intersection points of which are determined by the center lines of the circumsquare and the sun's orbit. The apex K of the circle around the white nucleus is defined by an arc around A with radius AZ. The golden ratio (Phi) occurs at least seven times. Since the human body (shown here in white) also follows the golden ratio in every detail, **the statement that man is the measure of all things is correct.**

"He created the heavens and the earth in truth. He covers the night with the day and the day with the night. And He has made the sun and the moon to serve (the people), each running for a term. Indeed, He is the Mighty, Ever Forgiving."
- Koran 39:5

What is most remarkable in this context is that the dimensions of the cellular cosmos also correspond to those of the two pillars of Jachin and Boaz in front of Solomon's Temple . Proportions: 18 cubits high, 12 cubits circumference (3.8 cubits diameter), 5 cubits diameter of the knobs/heads. The height of the sphere centers corresponds exactly to the radius of the earth (if the spheres were larger or smaller, the bases would no longer rest on the baseline). The height of a human being is also 5 cubits. **5 is the number of the golden ratio and of humans.** For the Freemasons, the two spheres/knobs on the pillars are heaven and earth. The "celestial sphere" again confirms the cellular cosmology.



Solomonic Pillars: Jachin and Boaz
= Firmness and Strength

The two Solomon's pillars and the sun between them are also coded as 101, the sum of the first 10 prime numbers (the 10th prime number is 23 = again 5). The mega rituals / initiation rituals are apparently about the opposition / duality (Twin Towers) of man, which must be torn down / destroyed so that he can attain perfect unity.



Cosmology of Philolaos

A cosmology that is strikingly consistent with cellular cosmology comes from the Greek philosopher Philolaos .

*At the centre of the universe was the **central fire** ("hearth"), around which all celestial bodies, including the Earth, orbit. **The central fire is invisible to humans** , as they live on the side of the Earth that is always facing away from it. Further out than the Earth, the moon, the sun, and the five planets known at that time (Mercury, Venus, Mars, Jupiter, and Saturn) orbit the central fire, around which the sphere of fixed stars also revolves. The sphere of fixed stars, as the outer boundary of the cosmos, is surrounded on all sides by an external fire. Philolaos believes the moon to be inhabited, and he sees the sun as **a glassy body that, like a lens, collects and transmits the light and heat coming from the external fire.***

*Philolaos imagines the creation of the world (cosmogony) in such a way that the world developed from the center (the central fire) in all directions simultaneously and in the same way. He considers this necessary because he does not consider any direction to be particularly special, but rather sees directions such as "upwards" and "downwards" as only relative, location-dependent statements in a point-symmetric universe. By combining unlimited factors such as time and empty space with limiting ones - such as the **spherical shape of the universe with a center** - the world comes into being.*

cenotaph for Newton

A colossal, but never built, design (1784) for a tomb and memorial for Sir Isaac Newton was created by the famous French architect Étienne-Louis Boullée. It inadvertently represents the structure of the cellular cosmos.



Kalachakra of the Dalai Lama

Four concentric levels can also be seen in the Kalachakra: The world, the lunar sphere (outer square), the solar sphere (second square), the star sphere (third square) and within it the holy of holies (core, 4th square). In each of the inner squares you have to imagine an inner circle. The moon would also have a blue water circle around it. Even if the correspondences are not 1:1, the structure is almost always the same.



Puzzles of the Copernican world view find simple answers

Why is **solar radiation weaker in the morning than at midday** , even though the sun is already high in the sky? The atmosphere cannot absorb the energy, as air does not resonate with light and heat radiation (see the tiled stove principle. The snow line is created by first heating the valley floor and then giving off its temperature to the air, which then rises). It cannot be due to the "angle" either, as the length changes only insignificantly compared to the total distance of the sun (145 million km). In cellular cosmology, on the other hand, the mysterious Copernican change in intensity is easily explained using the physical distance law .

Why do the planets not pull each other out of their orbits? Since Jupiter and Saturn, for example, are in conjunction every 200 years, they pull each other out of their orbits a little each time. If this happens often enough, they leave their orbit and crash into the sun, or disappear into space. The fact that this does not happen with all planets defies all probability and the so-called "three-body problem" . In cellular cosmology, the planets are **moved by the ether wind (macrocosmic electron spin) like floating buoys**. They take up their orbit depending on their density.

Where do the planets come from?

In the Copernican system, there is no explanation for the creation of such harmony. In cellular cosmology, the planets are created in the cell nucleus (Black Sun) and leave it one after the other. The oldest planet, closest to the Earth's surface, is the Moon, the youngest, closest to the Black Sun, is Pluto. With each new planet, the oldest is eliminated by landing on the Earth's surface, releasing its contents (new races) and thus initiating a "natural catastrophe", but at the same time a new beginning, a new era (evolutionary leap).

The common explanations of ebb and flow are entangled in contradictions

There are almost as many popular scientific explanations for the strange "tidal phenomenon" as there are physicists - each one tells a different story.

Explanation for the second tidal bulge facing away from the moon

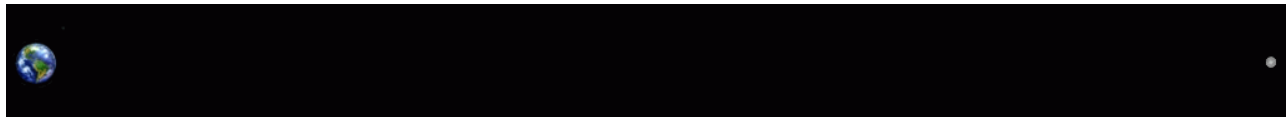
First attempt: The Earth-Moon system does not orbit the center of the Earth, but rather a rotation point that is slightly shifted toward the Moon. This creates a centrifugal force on the opposite side.

Refutation: This "imbalance" is not an eccentric movement, which creates a greater centrifugal force on the side facing away from the Moon, but an internal upheaval that puts every body on the Earth's surface into exactly the same imbalance, which is why there is no one-sided amplification.

Second attempt :

On the side facing away from the Moon, the Moon's attraction is slightly less than at the center of the Earth. This is why the water there loses its footing, so to speak, and the sea level rises - the water moves away from the Moon and forms a second tidal wave.

Refutation: The Moon and Earth add their attraction on the side facing away from the Moon toward the Moon.



Huge distance between Earth and Moon in the Copernican-heliocentric world view (CHWB)

Are the two tidal bulges the same size?

However, the two tidal bulges are not exactly the same size. The force that causes a tidal bulge to form is **7% stronger** on the side facing the moon than on the back. This difference is due to the fact that the gradient of the gravitational force - the degree of its spatial change - depends non-linearly on the distance: the strength of the gradient is inversely proportional to the cube of the distance between two masses (while the force itself is inversely proportional to the square). It is anything but trivial to calculate these tidal bulges separately, with their completely different causes. But what makes matters worse is the fact that both tidal bulges are roughly the same size! That would be an unlikely coincidence.

Six-hour flood delay

An argument against the conventional tide model is that the tide peak lags behind or leads the lunar zenith by 6 hours, even though gravity acts without time delay.

*"Laplace derived this tidal pattern purely theoretically for a sea of constant water depth and showed that **in the equatorial regions of such a sea the tides are always indirect, while in the polar regions they are direct** , but that at a certain intermediate latitude the vertical tides (but not the tidal currents) disappear... One can see **that the dynamic theory is extremely complicated.** "*

- "Ebb and flow of the sea of the atmosphere and the earth's continents" (p. 40), Albert Defant

Direct tide means that the high tide occurs at the moon's zenith and *indirect tide* means that the high tide follows the moon's zenith with a delay of 6 hours. There is no really good explanation for the "indirect tide" near the equator in the heliocentric world view (HWB). This is because the moon is almost exactly above the water masses and there are no land masses over long stretches. 6 hours correspond to 90 degrees of longitude, for example from South Africa across the Indian Ocean to Australia, or from Malaysia to Ecuador.

Strange Spring Tide

Another argument for cellular cosmology is the spring tide (a particularly strong high tide or low tide), which occurs both at Sun-Moon conjunction and at Sun-Moon opposition.

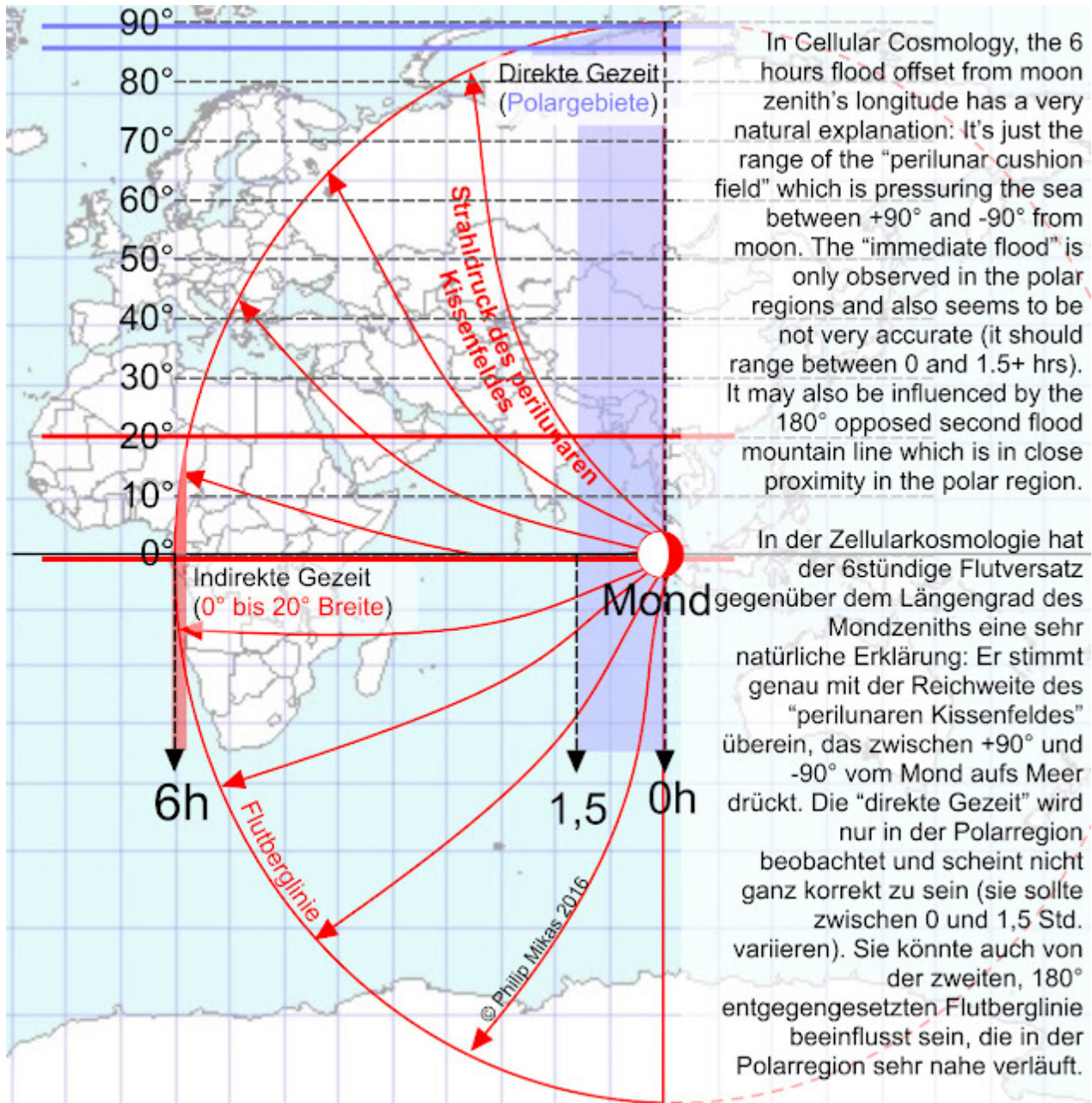
The spring tide is caused by particularly strong tidal forces when the sun, moon and earth are in a straight line. At full moon the earth is between the sun and moon (opposition), at new moon the moon is between the sun and earth (conjunction). In both cases a spring tide occurs.

- WP

What now? **Either the forces of both celestial bodies strengthen each other or they neutralize each other. Logically, both are not possible.** Incidentally, the sun exerts - empirically determined - an impressive 46% of the moon's gravitational pull on the water (not a problem in the central cosmos, but whether this can really be the case in the central cosmos should be urgently calculated with the distances and masses of both celestial bodies).

In cellular cosmology there is no ominous "gravitational pull", only radiant forces or pressure forces. The moon modulates the cosmic radiation and uses it to generate its own "perilunar field", which - just like the sun's perisolar field - spreads over half the hollow sphere and presses on the water at a specific frequency. Two identical tidal mountain chains form at the

edges, while low tide prevails just below the moon's zenith. The moon moves - like the sun - from east to west across the sky. The flood ridges follow its zenith in a north-south running semicircular flood wall.



The 6-hour flood delay and the second flood peak find a very simple explanation in cellular cosmology .

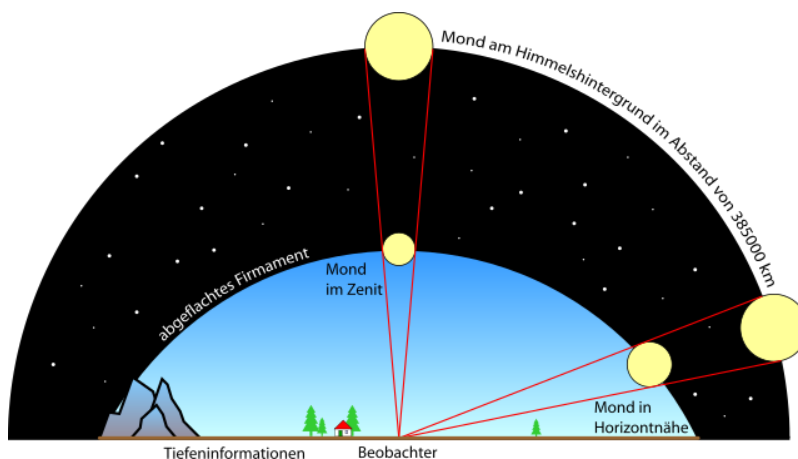
Proof: The tides are not caused by gravity but by radiation pressure.

By a simple change in the sign of the direction of the force, all previous contradictions are resolved .



The Moon Illusion

Another indication of the correctness of cellular cosmology is the so-called "moon illusion" which has puzzled great minds such as Ptolemy, Leonardo Da Vinci, Kepler, Descartes and Gauss and which has not yet been conclusively explained. A sky observer has the impression that the moon is larger near the horizon because he has the impression of a "flattened firmament". Constellations also appear stretched. The flattening and distortion of the firmament near the horizon find a very simple explanation in cellular cosmology.



cosmic radiation

Cosmic radiation is uniform everywhere on earth and can penetrate lead plates several meters thick. Recently it has been called "secondary radiation", i.e. it is said to be caused by radioactive particle decay in the atmosphere. The atmosphere is said to be primarily affected only by protons, neutrons and electrons. But the origin and composition are irrelevant, because there is a huge problem: if the radiation is to travel hundreds, if not thousands, of light years, and at the same time the radiation intensity decreases as the square of the distance, then the radiation sources would have to be so intense as if a permanent "big bang" were taking place there. In short: this contradicts all physics. There must therefore be a very strong radiation source in the immediate vicinity that simultaneously reaches every place on earth evenly, from a "center" as it were. And that is exactly what cellular cosmology

offers. Conclusion These four examples alone, out of countless others that could be listed here, should demonstrate to any thinking person the overwhelming superiority and elegance of the cellular cosmological model. It is not the case that it only leads to gradually better results, but rather the Copernican model is full of logical impossibilities and extreme "coincidences", which in sum already mean a falsification of the entire model.

What is outside the cellular universe?

There are other cellular cosmoses outside, just as the human body has other cells. However, the blueprint is always the same. If you understand **the structure of just one cell**, you no longer need to urgently examine the other cells. The information content remains the same!

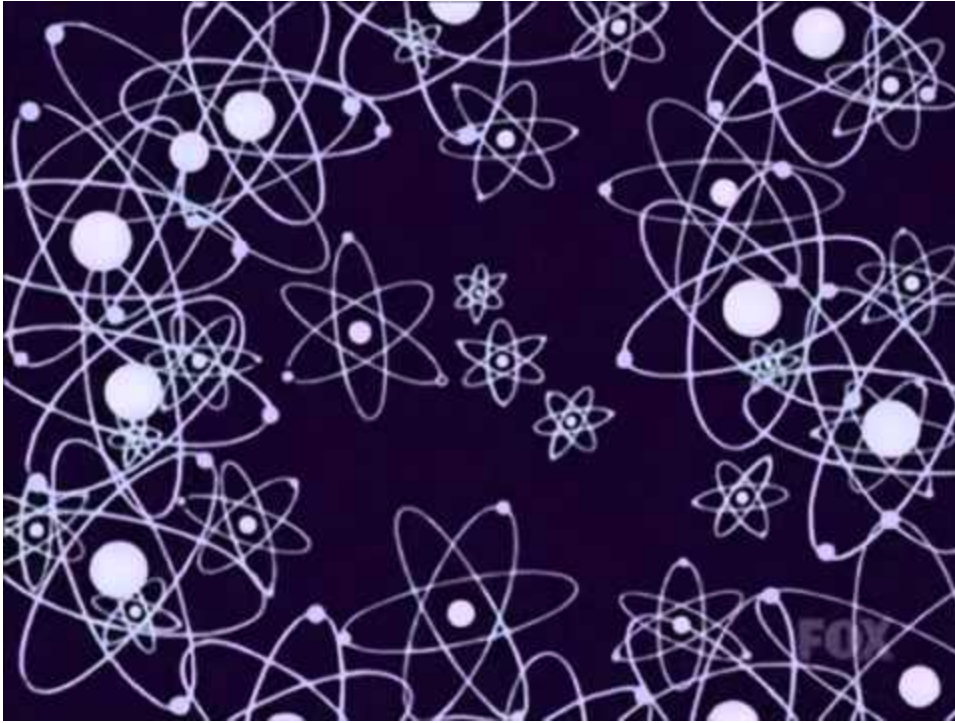
"Know thyself, then thou knowest God."

- Oracle of Delphi

The mathematical equivalent of this is the cross-sum principle (modulo division by 9). "

Infinity" therefore only exists quantitatively, not qualitatively! The biblical command "Seek first the kingdom of heaven" means exactly this: whoever has reached the center (the Father in heaven, the zero point, the origin, the singular source of radiation) on a vertical path of development no longer needs to worry about quantity.





Watch Video At: <https://youtu.be/ycvIJ9XMd94>

We must first get used to the idea that one and the same structure repeats itself ad infinitum, that the human body and human cell may alternate as a superstructure. And that we are therefore anything but "random products", that a universe "necessarily" arises from the order of numbers and the principles they represent. The density of prime numbers decreases with the natural logarithm. The natural logarithm can also be found in nature. So numbers definitely have something to do with natural laws. Peter Plichta proved that the periodic table of chemical elements is structured by prime numbers and that there are exactly 81 stable elements. Interestingly, the reciprocal $1/81$ again results in 0.1234567911..., i.e. the sequence of natural numbers. Numbers structure matter. Numbers are not a human invention, as the materialists claim.

Vortex **mathematics according to Marco Rodin** describes the creation of the torus from the vortex. The torus is the basic matrix of the universe, ie all universes that follow the law of numbers, which arises with the creation of 1 from 0, are structured in the same way. Numbers are principles and, in addition to quantities, are also qualities when they are arranged in a circle. See also astrology, the oldest cosmological science of all.



Watch Video At: <https://youtu.be/7pvuTZ5u6Kg>

Randy Powell explains vortex mathematics

Quantum physicist German: "I exist infinitely often!"

For physicist David Deutsch , our universe is just one of an infinite number in which he lives in parallel. What seems absurd to laypeople is something Deutsch deduces from quantum theory. **In an interview, he accuses his fellow physicists of ignoring objective reality.**

DD: According to quantum theory, physical reality consists of a much larger thing than the sum total of the things we see, the stars, the galaxies. Reality is a much larger thing, and we call this the multiverse . It has regions that behave almost autonomously from the other regions. And these are the different universes.

DD: With all theories that we know and understand, we can make correct predictions - regardless of whether we say something is real or not. But if you want to improve a theory, it's different. With the approach that a scientific theory is just a set of rules that you use to predict something, you would never find the rules. **Because the rules are only discovered by postulating that something is real and has real properties from which we can derive the observations. If you skip this step, you freeze progress.** And that's exactly what happened.

- Spiegel Online - Science , 11.02.2007

Cellular cosmology is 100% consistent with Deutsch's theory! And it would even assign a discrete location to each multiverse. The fact that more or less the same thing happens in all universes is due to their basic structure, according to which our reality is structured by the basic numbers of the decimal system (see Vortex Mathematics and Plichta).

Update:

Between Christmas 2015 and Epiphany I happened to come across two very simple **experiments on the rotation of the earth** that anyone can follow and that measure the rotation directly, depending on the latitude. This is what makes them different from Foucault's pendulum, which simply stands still at the equator!

Why has cellular cosmology remained unmentioned in spiritual literature?

It is not quite like that. The Holy Scriptures confirm it by, for example, placing the sun and the moon side by side as equals. Most creation myths - including the Vedic, Babylonian and Celtic (Edda) - correspond to cellular cosmology, rather than to heliocentrism, which corresponds to the Egyptian "sun cult".

Helio = I = Ego = Egocentrism.

A spiritual teacher has the choice of making a fool of himself - like Cyrus Teed and his followers - isolating himself and fighting the intellectual battle for the truth so that the truth can penetrate into the general consciousness perhaps 100 years later. Or he wants to reach and touch the maximum number of souls. Then he has to pay attention to the lowest common denominator, keep it low-key, limit himself to general statements and meet people where they are so as not to confuse them but to orient them towards God. His goal is to curb their ego, help them to master everyday life and become open to divine grace through growing selflessness and willingness to sacrifice. Only then are they ready for the truth, in whatever area it may appear. The world view should not be viewed in isolation from the character and personality of the person, because it automatically corresponds to their self-image.

Differentiation from other alternative theories

There are exactly three possibilities as to what the surface of the earth on which we live can look like:

1. Convex (solid or hollow)
2. Flat (disk)

3. Concave ("Cellular")

Option 2 is ruled out because the spherical shape has been fully mapped and is constantly documented by visibly orbiting satellites. The thousands of hours of video material would all have to be "fake", as would the rocket launches and billions of dollars in budgets, not to mention the question of where the signals come from that are received by billions of precisely aligned satellite dishes.

That leaves options 1 and 3. Both are **visually very similar**. Every point on the outside can be transformed inwards by circular reflection (reciprocal radii), all that is needed is a single change: light bends more than expected. Therefore, a non-optical experiment must be used to decide which of the two models is correct.

One such experiment would be, for example, a direct measurement of the Earth's rotation based on the law of conservation of angular momentum. If the Earth does not rotate, then the sun, moon and stars must rotate. And that would destroy the consistency of model 1, while confirming model 3.

Flat Earth

There are "over 200 arguments" against the heliocentric full-sphere world view, some of which are justified, but most of which are also hair-raisingly naive.

Watch Video At: <https://youtu.be/0GCac9fFH6o>

The world map of the flat earthers is heavily distorted and looks like this:





The question is, what good reason is there against the spherical shape? Because in addition to being "flat", the solid sphere can also be hollow and inverted. **The opposite of convex is not flat, but rather - concave!**

Despite this, there are more videos about the "Flat Earth" than about any other alternative model, which is quite astonishing. Most of them have only been created in the last two or three years. As if someone wanted to ridicule the whole discussion about the solid sphere with an ultimately even more dubious theory.

The most sensible explanation for the "Flat Earth hype" phenomenon is probably this: people have realized that they are being lied to in all areas of science, that science only serves to justify anti-life politics. So they question everything, including the world view. The Flat Earth is exactly halfway between the Convex and Concave Earth. However, they do not dare to

take the final step to Concave Earth. Perhaps because then "God" would suddenly become too much of a "centre" (cell nucleus / heaven / Valhalla / Meru / Olympus), and they would feel abandoned by God in these end times. **Worldview is always also self-view!**

"It is striking that the bold thesis that the Earth is flat gained new popularity just at the time when US President Barack Obama – who also took office in 2009 – referred to doubters of man-made climate change as "members of the Flat Earth Society": Within just 12 months, the video portal YouTube was already flooded with masses of videos claiming to provide evidence that the Earth is in fact flat.

There are therefore some indications that we are dealing with an operation based on the model of "psychological warfare" and "reverse psychology" , which requires major support from intelligence agencies, governments and corporations in order to discredit all those who critically examine events such as those of September 11th by claiming that they also believe such nonsense as that the Earth is flat.

While this hardly deters long-standing supporters of the truth movement or so-called "truthers" will continue to critically engage with such false flag operations and similar topics, the infiltration of the scene with the flat earth theory is certainly capable of deterring potentially critical people who come into contact with suppressed information for the first time because they have to fear making themselves look ridiculous in front of others by conditioning the general public according to the principle of the Pavlovian reflex with an equation along the lines of "doubts about Osama bin Laden's guilt / about man-made climate change etc. = belief in the flat earth theory etc."

The topic of "flat earth" is thus the ideal means of mind control that could have been concocted by the Tavistock Institute or the CIA in order to be able to automatically classify critical thinking by the "mainstream media" as a "thought crime" in the Orwellian sense."

Source: Pravda-tv.com from 02/2016

The first **refutation of the "Flat Earth"** becomes a triviality in the age of mass air travel (in contrast to cellular cosmology):

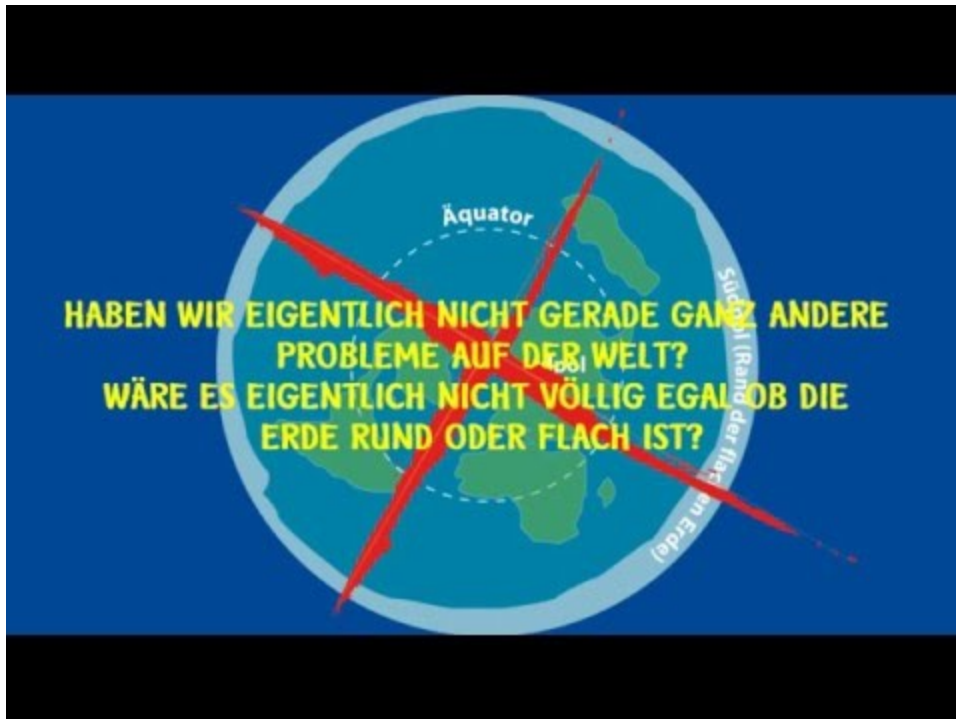
*"So let's fly from Johannesburg to Sao Paulo, it's 7429 kilometers. Flight time 10 hours 15 minutes. For comparison, a flight route from Moscow to New York: it's 7509 kilometers (80 kilometers more). Flight time 9 hours 55 minutes. The distances are about the same and so are the flight times. **If the earth were flat, the flight from Johannesburg to Sao Paulo would take much longer, about three times as long.** So the flat earth is the "latest fad" that can only fade away, because the earth is spherical..."*

But the Christian blogger who made this argument also ultimately makes a mistake when he continues:

"... and revolves around the sun, the writers of the Old Testament did not know this, which is proof that these writings are not inspired by God."

Because the idea that the earth "orbits the sun"... it was Copernicus who gave us this "brilliant idea" many centuries later. But this first and most serious of the "great insults to humanity" is also one of the causes of today's worldwide "crisis of faith". Therefore, it is high time for the next step in the world view!

The second refutation is even more trivial:



Watch Video At: <https://youtu.be/6eWaT70n-Do>

Hollow world with openings in the polar caps according to Admiral Byrd

This theory does not doubt existing astronomy, but introduces an additional dimension, namely a completely hollowed-out Earth inside.

Watch Video At: <https://youtu.be/RaPtq8F2hUc>

The contradictions of the prevailing worldview remain completely unresolved, and instead more questions arise. Recently, even Edward Snowden is said to have confirmed the existence of a "billion-year-old culture" inside the earth.



Resistance to the new worldview

In his decades of experience, the author has come to realize that very few people are prepared to simply give up their adopted worldview, even if it is only to exchange it for a better one. People find it much harder to part with spiritual "possessions" (convictions, beliefs) than with material things.

"The truth has to overcome a thousand obstacles to get to paper undamaged and from paper back to the head."

- Georg Christoph Lichtenberg (1742 - 1799)

Even an angular momentum experiment, which costs nothing and can be repeated in seconds in any large elevator, is not enough to transfer the world view question from the level of belief and ideology to hard-nosed science.

- The scientists and scholars see their status threatened.
- The "esotericists" and "exopoliticians" fear that with the end of the galactocentric world view, their longed-for "aliens" will also lose their right to exist.
- The missionaries see their exclusivity threatened when God suddenly becomes directly accessible to everyone.
- Politicians and secret societies thrive on the ignorance of the masses and will be wary of loosening the intellectual shackles of research and chaos philosophy.
- Most normal people are happy if they survive and secure their bare existence.
- Open and secret atheists have particular difficulty with the idea of a benevolent father above the starry sky (Schiller's ode).

The question of worldview is a question of self-image. The world, God and self cannot be observed separately! Therefore, only genuine truth seekers, scientists in the best sense of the word (those who really want to know) are prepared to confront the new, infinitely more coherent reality and admit to having been completely misinformed for most of their lives. Finding and winning over these people seems more difficult than the proverbial needle in a haystack.

Links on the topic

The oldest and most comprehensive website on the subject of the hollow earth is that of the physicist [Rolf Keppler](#) .

He got his knowledge from [Helmut Diehl](#) , who knew Johannes Lang (the German author of the fundamental work "The Hollow Earth Theory") personally.

The article "[The True Structure of Our Universe](#)" by "Honigmann" also offers a good summary and introduction (yes, the hollow earth theory has now arrived on the "scene" and is already secretly "cooking" in many people's minds).

Other smaller sites are those of [Hans Dressler](#) and a Polish site (in English) with a [laser experiment](#) . and [a few thoughts](#) on the glass layer theory and geostationary satellites.

The American graphic artist [Steven Christopher](#) supports the "glass layer theory" that a layer of glass several centimeters thick runs through at an altitude of 100 km. He proves this with strange glass finds in the desert and other areas. In my opinion, this is contradicted by light refraction phenomena that have not been observed, as well as satellites that have been orbiting in space for years and have radio contact, as well as crystal-clear telescopic images of the planets and fixed stars, etc. Stevens' graphics and animation videos are elaborate and lovingly made, although in many respects they are incorrect in my opinion.

In the [opening animation](#) for the popular horror series "Games of Thrones" you can see an "inner world" of sea and continents. In the middle hangs a diamond sun, surrounded by steel planetary orbits.

This page is currently (Jan/2015) being expanded. To make sure you don't miss any interesting additions, simply subscribe. Please also share on FB.

[Join the Cellular Cosmology Discussion Group](#)



Yes, the "glass jar" is really a car and not a spaceship...

Refutation of the theory of relativity due to its inapplicability to rotational motion

Gravitation ist keine "Anziehung" sondern Strahlkraft!

Mondkrater sind nicht durch Meteorite entstanden!