

# Biblical Concave Earth

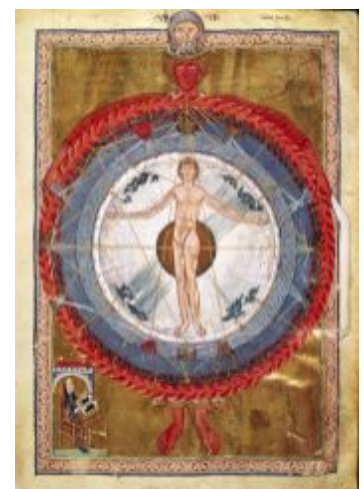
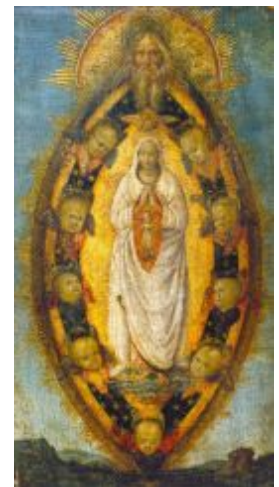
[concaveunbound.wordpress.com/2018/03/28/biblical-concave-earth](http://concaveunbound.wordpress.com/2018/03/28/biblical-concave-earth)

View all posts by Cosmology Unknown

March 28, 2018

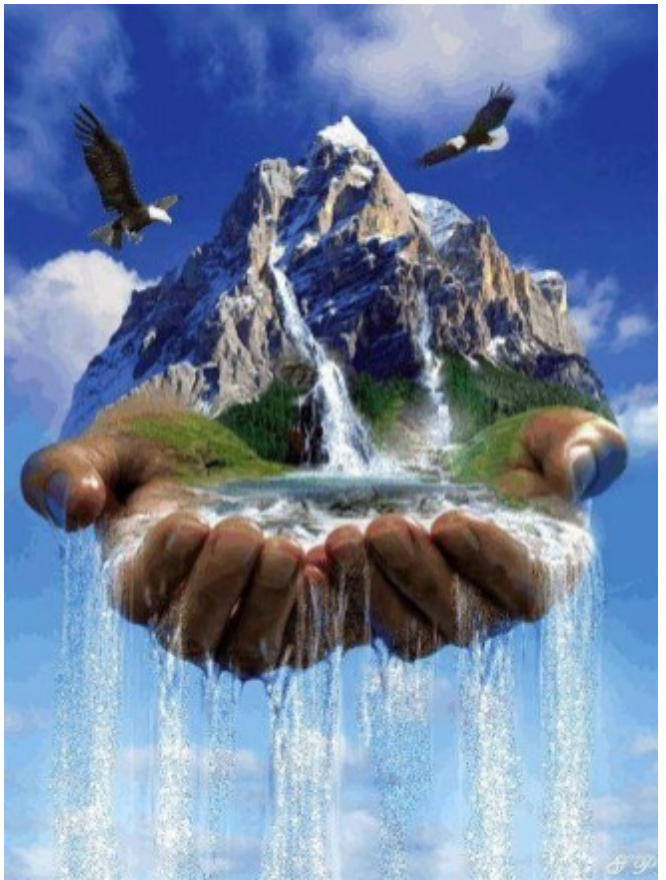
**Isaiah 40:12** *“Who hath measured the waters in the **hollow** of his hand, and meted out heaven with the span, and comprehended the dust of the earth in a measure, and weighed the mountains in scales, and the hills in a balance”*

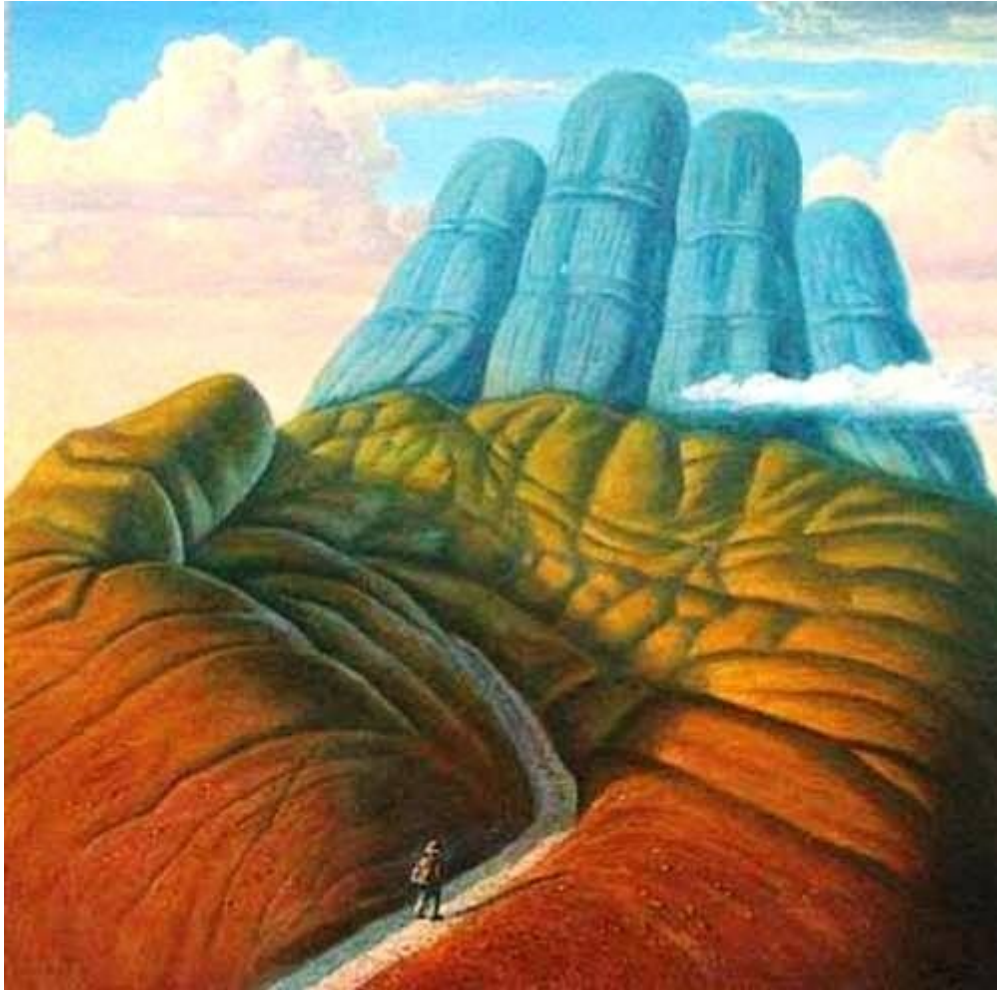
I'm not a firm believer that all truth can be found in one place, such as scripture alone. In fact, I don't care to believe anything that might hinder my ability for future knowledge. It's only wise that we take everything we read with a grain of salt. The more we expand our sources, the more knowledge we are likely to gain.. What does everything say collectively as a whole? What resonates & fills up the most in that pile of metaphoric 'salt we patiently take by the grain'? These are the questions we should be asking ourselves & finding the answers to. In order to achieve this, the deep research of multiple topics & philosophies are required; and scripture will be the first to analyze here.











While millions have been convinced that the bible tells of a flat earth paradigm, I would however like to point out how well it correlates with a concave earth. I'd also like to bring some awareness to how only our beliefs limit the creation, therefor limiting the creator. Are we that arrogant to actually think we have it all figured out? Do we recognize how minuscule we are compared to the monstrous **world around us**? Either way, I'm not here to say "what is" or "what isn't", but only to share my research. And although I will refrain from the astro theo-cosmological aspect of the bible, I would like to try & highlight some significant details that caught my attention after becoming highly suspicious of living within the interior of earth... I will continue to update this thread upon further research.



**Genesis 1: 2** *“And the earth was without form, and void; and darkness was upon the face of the deep. And the Spirit of God moved upon the face of the waters”*



**“Earth was without form and void”**; So after earth was created, it still had no form, nor void, but it was in existence?

**“and darkness was on the face of the deep”**; No void, with darkness on the face of the **deep**? We will see that term (deep) quite often

**“And the spirit of God moved upon the face of the waters”**; Meaning he was not underwater, he was moving upon the face of water.

There was no form or void on the face of the deep or the face of water until God moved upon them. This would suggest creation from within. We will get into more references of the terms “deep” and “cave” further on.



**Psalm 104: 2** “Who covers thyself with light as with a garment: who stretch out the heavens like a curtain”

**Psalm 104: 6** “Thou covers it with the deep as with a garment: the waters stood above the mountains”

**“Who stretch out the heavens like a curtain”**: Would a flat or convex earth require a “stretch out of the heavens”? Always possible, but the shape of a “garment” is similar to that of light propagation within a concave earth model.

**“Thou covers it with the deep as with a garment”**: There’s that term “deep” again.

**“The waters stood above the mountains”**: There’s logically only one possibility if this verse was a reality, as water would not stand above mountains on a flat or convex earth; maybe flow, but not stand. Only a concave earth would make sense.





**Psalm 136: 6** *“To him that stretched out the earth above the waters: for his mercy endureth for ever”*

**Stretched out the earth above the waters:** *“Self explanatory if earth is concave”*

**Psalm 40:22** *“It is he that sitteth upon the circle of the earth, and the inhabitants thereof are as grasshoppers; that stretcheth out the heavens as a curtain, and spreadeth them out as a tent to dwell in”*



**Proverbs 8:27** *“When He established the heavens, I was there, when he inscribed a circle on the face of the deep”*

**“inscribed a circle on the face of the deep”**: Self explanatory when considering a concave earth



**Matthew 12:40** *“For as Jonas was three days and three nights in the whale’s belly; so shall the Son of man be three days and three nights in the heart of the earth”*

Does this signify being on the top surface of anything, whether flat or convex? I personally don't see it. The existence of humanity dwelling within the hollow of earth may be more evident than most will recognize.



*To be continued*